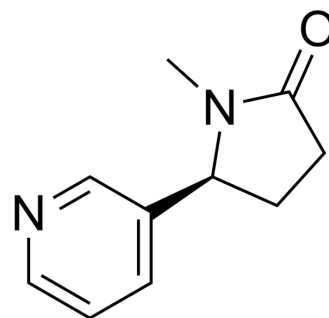


Cotinine

Cat. No.:	HY-B1178
CAS No.:	486-56-6
Molecular Formula:	C ₁₀ H ₁₂ N ₂ O
Molecular Weight:	176.22
Target:	Endogenous Metabolite
Pathway:	Metabolic Enzyme/Protease
Storage:	4°C, protect from light * In solvent : -80°C, 6 months; -20°C, 1 month (protect from light)



SOLVENT & SOLUBILITY

In Vitro	Ethanol : 120 mg/mL (680.97 mM; Need ultrasonic)					
	DMSO : 65 mg/mL (368.86 mM; Need ultrasonic)					
	Preparing Stock Solutions	Solvent	Mass	1 mg	5 mg	10 mg
		Concentration				
		1 mM		5.6747 mL	28.3736 mL	56.7472 mL
5 mM			1.1349 mL	5.6747 mL	11.3494 mL	
10 mM		0.5675 mL	2.8374 mL	5.6747 mL		
Please refer to the solubility information to select the appropriate solvent.						
In Vivo	1. Add each solvent one by one: 10% DMSO >> 40% PEG300 >> 5% Tween-80 >> 45% saline Solubility: ≥ 2.17 mg/mL (12.31 mM); Clear solution					
	2. Add each solvent one by one: 10% DMSO >> 90% (20% SBE-β-CD in saline) Solubility: ≥ 2.17 mg/mL (12.31 mM); Clear solution					
	3. Add each solvent one by one: 10% DMSO >> 90% corn oil Solubility: ≥ 2.17 mg/mL (12.31 mM); Clear solution					

BIOLOGICAL ACTIVITY

Description	Cotinine ((-)-Cotinine), an alkaloid in tobacco and a major metabolite of nicotine, is used as a biological indicator to measure the composition of tobacco smoke ^[1]
IC ₅₀ & Target	Human Endogenous Metabolite

CUSTOMER VALIDATION

-
- Research Square Preprint. 2021 Aug.

See more customer validations on www.MedChemExpress.com

REFERENCES

[1]. Dolcini MM, et al. An assessment of the validity of adolescent self-reported smoking using three biological indicators. *Nicotine Tob Res.* 2003 Aug;5(4):473-83.

Caution: Product has not been fully validated for medical applications. For research use only.

Tel: 609-228-6898

Fax: 609-228-5909

E-mail: tech@MedChemExpress.com

Address: 1 Deer Park Dr, Suite Q, Monmouth Junction, NJ 08852, USA