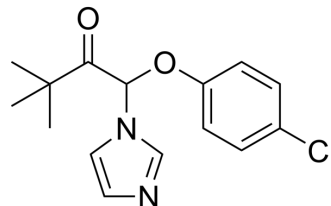


## Climbazole

Cat. No.:	HY-B1151		
CAS No.:	38083-17-9		
Molecular Formula:	C <sub>15</sub> H <sub>17</sub> ClN <sub>2</sub> O <sub>2</sub>		
Molecular Weight:	292.76		
Target:	Fungal		
Pathway:	Anti-infection		
Storage:	Powder	-20°C	3 years
		4°C	2 years
	In solvent	-80°C	2 years
		-20°C	1 year



### SOLVENT & SOLUBILITY

In Vitro	DMSO : 100 mg/mL (341.58 mM; Need ultrasonic)					
		Solvent Concentration	Mass	1 mg	5 mg	10 mg
	Preparing Stock Solutions	1 mM		3.4158 mL	17.0788 mL	34.1577 mL
		5 mM		0.6832 mL	3.4158 mL	6.8315 mL
10 mM			0.3416 mL	1.7079 mL	3.4158 mL	
Please refer to the solubility information to select the appropriate solvent.						
In Vivo	1. Add each solvent one by one: 10% DMSO >> 40% PEG300 >> 5% Tween-80 >> 45% saline Solubility: ≥ 2.5 mg/mL (8.54 mM); Clear solution					
	2. Add each solvent one by one: 10% DMSO >> 90% (20% SBE-β-CD in saline) Solubility: ≥ 2.5 mg/mL (8.54 mM); Clear solution					
	3. Add each solvent one by one: 10% DMSO >> 90% corn oil Solubility: ≥ 2.5 mg/mL (8.54 mM); Clear solution					

### BIOLOGICAL ACTIVITY

Description	Climbazole (BAY-e 6975) is a potent antifungal agent. Climbazole also is a potent inducer of rat hepatic cytochrome P450 <sup>[2]</sup> .
In Vitro	Climbazole (20 μM; 48 hours) significantly decreases exosome secretion in aggressive prostate cancer (PCa) cells <sup>[1]</sup> . Climbazole (20 μM) significantly inhibits the protein concentration of Alix, and Rab27a but not nSMase2 <sup>[1]</sup> . Climbazole is a potent inhibitor of exosome biogenesis and/or secretion <sup>[2]</sup> . MCE has not independently confirmed the accuracy of these methods. They are for reference only.

---

## REFERENCES

---

- [1]. Amrita Datta, et al. High-throughput screening identified selective inhibitors of exosome biogenesis and secretion: A drug repurposing strategy for advanced cancer. *Sci Rep.* 2018 May 25;8(1):8161.
- [2]. Y Kobayashi, et al. Climbazole is a new potent inducer of rat hepatic cytochrome P450. *J Toxicol Sci.* 2001 Aug;26(3):141-50.
- 

**Caution: Product has not been fully validated for medical applications. For research use only.**

Tel: 609-228-6898

Fax: 609-228-5909

E-mail: [tech@MedChemExpress.com](mailto:tech@MedChemExpress.com)

Address: 1 Deer Park Dr, Suite Q, Monmouth Junction, NJ 08852, USA