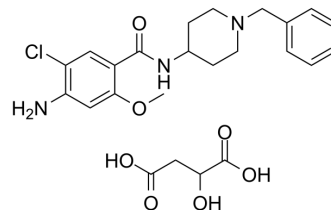


## Clebopride malate

<b>Cat. No.:</b>	HY-B1613A
<b>CAS No.:</b>	57645-91-7
<b>Molecular Formula:</b>	C <sub>24</sub> H <sub>30</sub> ClN <sub>3</sub> O <sub>7</sub>
<b>Molecular Weight:</b>	507.96
<b>Target:</b>	Dopamine Receptor
<b>Pathway:</b>	GPCR/G Protein; Neuronal Signaling
<b>Storage:</b>	4°C, sealed storage, away from moisture * In solvent : -80°C, 6 months; -20°C, 1 month (sealed storage, away from moisture)



### SOLVENT & SOLUBILITY

#### In Vitro

DMSO : 60 mg/mL (118.12 mM; Need ultrasonic)  
H<sub>2</sub>O : 8.33 mg/mL (16.40 mM; Need ultrasonic)

Preparing Stock Solutions	Solvent Concentration	Mass		
		1 mg	5 mg	10 mg
	1 mM	1.9687 mL	9.8433 mL	19.6866 mL
	5 mM	0.3937 mL	1.9687 mL	3.9373 mL
	10 mM	0.1969 mL	0.9843 mL	1.9687 mL

Please refer to the solubility information to select the appropriate solvent.

#### In Vivo

- Add each solvent one by one: 10% DMSO >> 40% PEG300 >> 5% Tween-80 >> 45% saline  
Solubility: ≥ 3 mg/mL (5.91 mM); Clear solution
- Add each solvent one by one: 10% DMSO >> 90% (20% SBE-β-CD in saline)  
Solubility: ≥ 3 mg/mL (5.91 mM); Clear solution
- Add each solvent one by one: 10% DMSO >> 90% corn oil  
Solubility: ≥ 3 mg/mL (5.91 mM); Clear solution

### BIOLOGICAL ACTIVITY

#### Description

Clebopride malate is a dopamine antagonist drug with antiemetic and prokinetic properties used to treat functional gastrointestinal disorders. Target: dopamine Clebopride is a substituted benzamide, closely related to metoclopramide.

### CUSTOMER VALIDATION

- 
- Cell Metab. 2022 Feb 7;34(3):424-440.e7.

See more customer validations on [www.MedChemExpress.com](http://www.MedChemExpress.com)

**Caution: Product has not been fully validated for medical applications. For research use only.**

Tel: 609-228-6898

Fax: 609-228-5909

E-mail: [tech@MedChemExpress.com](mailto:tech@MedChemExpress.com)

Address: 1 Deer Park Dr, Suite Q, Monmouth Junction, NJ 08852, USA