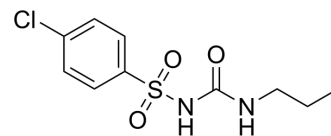


Chlorpropamide

Cat. No.:	HY-B1429		
CAS No.:	94-20-2		
Molecular Formula:	C ₁₀ H ₁₃ ClN ₂ O ₃ S		
Molecular Weight:	276.74		
Target:	Na ⁺ /K ⁺ ATPase		
Pathway:	Membrane Transporter/Ion Channel		
Storage:	Powder	-20°C	3 years
		4°C	2 years
	In solvent	-80°C	2 years
		-20°C	1 year



SOLVENT & SOLUBILITY

In Vitro

DMSO : ≥ 100 mg/mL (361.35 mM)
 H₂O : 0.67 mg/mL (2.42 mM; Need ultrasonic)
 * "≥" means soluble, but saturation unknown.

Preparing Stock Solutions	Solvent Concentration	Mass		
		1 mg	5 mg	10 mg
	1 mM	3.6135 mL	18.0675 mL	36.1350 mL
	5 mM	0.7227 mL	3.6135 mL	7.2270 mL
	10 mM	0.3614 mL	1.8068 mL	3.6135 mL

Please refer to the solubility information to select the appropriate solvent.

In Vivo

- Add each solvent one by one: 10% DMSO >> 40% PEG300 >> 5% Tween-80 >> 45% saline
Solubility: ≥ 2.5 mg/mL (9.03 mM); Clear solution
- Add each solvent one by one: 10% DMSO >> 90% (20% SBE-β-CD in saline)
Solubility: ≥ 2.5 mg/mL (9.03 mM); Clear solution
- Add each solvent one by one: 10% DMSO >> 90% corn oil
Solubility: ≥ 2.5 mg/mL (9.03 mM); Clear solution

BIOLOGICAL ACTIVITY

Description

Chlorpropamide is an oral hypoglycemic agent studied in non-insulin-dependent diabetes mellitus (NIDDM).

CUSTOMER VALIDATION

-
- ACS Omega. 2020 Nov 15;5(46):29935-29942.

See more customer validations on www.MedChemExpress.com

Caution: Product has not been fully validated for medical applications. For research use only.

Tel: 609-228-6898

Fax: 609-228-5909

E-mail: tech@MedChemExpress.com

Address: 1 Deer Park Dr, Suite Q, Monmouth Junction, NJ 08852, USA