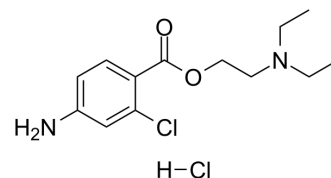


Chloroprocaine hydrochloride

Cat. No.:	HY-B1604
CAS No.:	3858-89-7
Molecular Formula:	C ₁₃ H ₂₀ Cl ₂ N ₂ O ₂
Molecular Weight:	307.22
Target:	Na ⁺ /K ⁺ ATPase
Pathway:	Membrane Transporter/Ion Channel
Storage:	4°C, protect from light, stored under nitrogen * In solvent : -80°C, 6 months; -20°C, 1 month (protect from light, stored under nitrogen)



SOLVENT & SOLUBILITY

In Vitro	H ₂ O : 100 mg/mL (325.50 mM; Need ultrasonic)																					
	DMSO : 83.33 mg/mL (271.24 mM; Need ultrasonic)																					
	<table border="1"> <thead> <tr> <th rowspan="2">Solvent</th> <th rowspan="2">Mass</th> <th colspan="3">Concentration</th> </tr> <tr> <th>1 mg</th> <th>5 mg</th> <th>10 mg</th> </tr> </thead> <tbody> <tr> <td rowspan="3">Preparing Stock Solutions</td> <td>1 mM</td> <td>3.2550 mL</td> <td>16.2750 mL</td> <td>32.5500 mL</td> </tr> <tr> <td>5 mM</td> <td>0.6510 mL</td> <td>3.2550 mL</td> <td>6.5100 mL</td> </tr> <tr> <td>10 mM</td> <td>0.3255 mL</td> <td>1.6275 mL</td> <td>3.2550 mL</td> </tr> </tbody> </table>	Solvent	Mass	Concentration			1 mg	5 mg	10 mg	Preparing Stock Solutions	1 mM	3.2550 mL	16.2750 mL	32.5500 mL	5 mM	0.6510 mL	3.2550 mL	6.5100 mL	10 mM	0.3255 mL	1.6275 mL	3.2550 mL
	Solvent			Mass	Concentration																	
1 mg		5 mg	10 mg																			
Preparing Stock Solutions	1 mM	3.2550 mL	16.2750 mL	32.5500 mL																		
	5 mM	0.6510 mL	3.2550 mL	6.5100 mL																		
	10 mM	0.3255 mL	1.6275 mL	3.2550 mL																		
Please refer to the solubility information to select the appropriate solvent.																						
In Vivo	<ol style="list-style-type: none"> Add each solvent one by one: 10% DMSO >> 40% PEG300 >> 5% Tween-80 >> 45% saline Solubility: ≥ 6.25 mg/mL (20.34 mM); Clear solution Add each solvent one by one: 10% DMSO >> 90% (20% SBE-β-CD in saline) Solubility: ≥ 6.25 mg/mL (20.34 mM); Clear solution Add each solvent one by one: 10% DMSO >> 90% corn oil Solubility: ≥ 6.25 mg/mL (20.34 mM); Clear solution 																					

BIOLOGICAL ACTIVITY

Description	Chloroprocaine hydrochloride (2-Chloroprocaine hydrochloride) is a potent inhibitor of Na,K-ATPase activity with an IC ₅₀ of 13 mM. Chloroprocaine hydrochloride blocks peripheral nerve ^[1] .
IC₅₀ & Target	IC ₅₀ : 13 mM (Na,K-ATPase) ^[1]
In Vivo	In mice, the intravenous LD ₅₀ of Chloroprocaine hydrochloride is 97 mg/kg and the subcutaneous LD ₅₀ of Chloroprocaine hydrochloride is 950 mg/kg ^[1] .

MCE has not independently confirmed the accuracy of these methods. They are for reference only.

REFERENCES

- [1]. H Kutchai, et al. Inhibition of the Na,K-ATPase of Canine Renal Medulla by Several Local Anesthetics. Pharmacol Res. 2001 Apr;43(4):399-403.
- [2]. Chloroprocaine HCl Injection.
-

Caution: Product has not been fully validated for medical applications. For research use only.

Tel: 609-228-6898

Fax: 609-228-5909

E-mail: tech@MedChemExpress.com

Address: 1 Deer Park Dr, Suite Q, Monmouth Junction, NJ 08852, USA