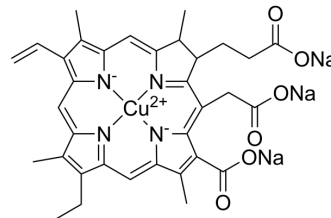


## Chlorophyllin sodium copper salt

Cat. No.:	HY-B0911
CAS No.:	11006-34-1
Molecular Formula:	C <sub>34</sub> H <sub>31</sub> CuN <sub>4</sub> Na <sub>3</sub> O <sub>6</sub>
Molecular Weight:	724.15
Target:	Biochemical Assay Reagents
Pathway:	Others
Storage:	4°C, sealed storage, away from moisture * In solvent : -80°C, 6 months; -20°C, 1 month (sealed storage, away from moisture)



### SOLVENT & SOLUBILITY

In Vitro	H <sub>2</sub> O : ≥ 66.66 mg/mL (92.05 mM) DMSO : < 1 mg/mL (insoluble or slightly soluble) * "≥" means soluble, but saturation unknown.																							
	<table border="1"> <thead> <tr> <th rowspan="2">Preparing Stock Solutions</th> <th>Solvent Concentration</th> <th>Mass</th> <th>1 mg</th> <th>5 mg</th> <th>10 mg</th> </tr> </thead> <tbody> <tr> <td>1 mM</td> <td>1.3809 mL</td> <td>6.9046 mL</td> <td>13.8093 mL</td> <td></td> <td></td> </tr> <tr> <td>5 mM</td> <td>0.2762 mL</td> <td>1.3809 mL</td> <td>2.7619 mL</td> <td></td> <td></td> </tr> <tr> <td>10 mM</td> <td>0.1381 mL</td> <td>0.6905 mL</td> <td>1.3809 mL</td> <td></td> <td></td> </tr> </tbody> </table> <p>Please refer to the solubility information to select the appropriate solvent.</p>	Preparing Stock Solutions	Solvent Concentration	Mass	1 mg	5 mg	10 mg	1 mM	1.3809 mL	6.9046 mL	13.8093 mL			5 mM	0.2762 mL	1.3809 mL	2.7619 mL			10 mM	0.1381 mL	0.6905 mL	1.3809 mL	
Preparing Stock Solutions	Solvent Concentration		Mass	1 mg	5 mg	10 mg																		
	1 mM	1.3809 mL	6.9046 mL	13.8093 mL																				
5 mM	0.2762 mL	1.3809 mL	2.7619 mL																					
10 mM	0.1381 mL	0.6905 mL	1.3809 mL																					
In Vivo	1. Add each solvent one by one: PBS Solubility: 5 mg/mL (6.90 mM); Clear solution; Need ultrasonic																							

### BIOLOGICAL ACTIVITY

Description	Chlorophyllin sodium copper salt is an orally active green pigment, antioxidant and antimutagenic agent. Chlorophyllin sodium copper salt promotes hematopoiesis and thrombopoiesis <sup>[1][2]</sup> .
In Vivo	Chlorophyllin sodium copper salt (25, 50, 100 mg/kg/day; Gastrogavage; for 20 days) with medium and high doses increases peripheral blood white cell and platelet counts <sup>[1]</sup> . MCE has not independently confirmed the accuracy of these methods. They are for reference only.
	Animal Model: Aplastic anemic BALB/c mice <sup>[1]</sup>
	Dosage: 25, 50, 100 mg/kg

Administration:	Gastrogavage; daily; for 20 days
Result:	Peripheral blood white cell and platelet counts were increased by medium and high doses.  The percentage of Forkhead box protein 3 (FOXP3 <sup>+</sup> ) T cells was increased in T cell-MSC cocultures, and the cytokine transforming growth factor $\beta$ 1 was up-regulated.

## REFERENCES

- [1]. Li-Ming Yin, et al. Effects of sodium copper chlorophyllin on mesenchymal stem cell function in aplastic anemia mice. Chin J Integr Med. 2013 May;19(5):360-6.
- [2]. Sanja M. Petrovic, et al. Chlorophyllin sodium copper salt in hydrogel formulations: spectrophotometric stability studies and in vitro release. Chemical Papers. Volume 77, pages 2635–2645, (2023).

**Caution: Product has not been fully validated for medical applications. For research use only.**

Tel: 609-228-6898

Fax: 609-228-5909

E-mail: tech@MedChemExpress.com

Address: 1 Deer Park Dr, Suite Q, Monmouth Junction, NJ 08852, USA