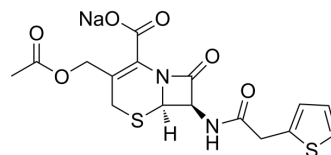


Cephalothin sodium

Cat. No.:	HY-B1275
CAS No.:	58-71-9
Molecular Formula:	C ₁₆ H ₁₅ N ₂ NaO ₆ S ₂
Molecular Weight:	418.42
Target:	Bacterial; Antibiotic
Pathway:	Anti-infection
Storage:	4°C, sealed storage, away from moisture * In solvent : -80°C, 6 months; -20°C, 1 month (sealed storage, away from moisture)



SOLVENT & SOLUBILITY

In Vitro	H ₂ O : 50 mg/mL (119.50 mM; Need ultrasonic)						
	DMSO : 50 mg/mL (119.50 mM; Need ultrasonic)						
	Preparing Stock Solutions	Solvent Concentration	Mass	1 mg	5 mg	10 mg	
				1 mM	2.3899 mL	11.9497 mL	23.8994 mL
				5 mM	0.4780 mL	2.3899 mL	4.7799 mL
10 mM				0.2390 mL	1.1950 mL	2.3899 mL	
Please refer to the solubility information to select the appropriate solvent.							
In Vivo	1. Add each solvent one by one: PBS Solubility: 50 mg/mL (119.50 mM); Clear solution; Need ultrasonic						
	2. Add each solvent one by one: 10% DMSO >> 40% PEG300 >> 5% Tween-80 >> 45% saline Solubility: ≥ 2.5 mg/mL (5.97 mM); Clear solution						
	3. Add each solvent one by one: 10% DMSO >> 90% (20% SBE-β-CD in saline) Solubility: ≥ 2.5 mg/mL (5.97 mM); Clear solution						

BIOLOGICAL ACTIVITY

Description	Cephalothin sodium is a first generation cephem antibiotic with a wide range antibacterial activity, is active against gram-positive and gram-negative bacteria.
IC ₅₀ & Target	β-lactam

REFERENCES

[1]. Dowarah R, et al. Selection and characterization of probiotic lactic acid bacteria and its impact on growth, nutrient digestibility, health and antioxidant status in weaned piglets. PLoS One. 2018 Mar 8;13(3):e0192978.

Caution: Product has not been fully validated for medical applications. For research use only.

Tel: 609-228-6898

Fax: 609-228-5909

E-mail: tech@MedChemExpress.com

Address: 1 Deer Park Dr, Suite Q, Monmouth Junction, NJ 08852, USA