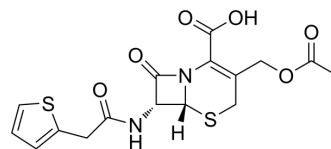


Cephalothin

Cat. No.:	HY-B1275A
CAS No.:	153-61-7
Molecular Formula:	C ₁₆ H ₁₆ N ₂ O ₆ S ₂
Molecular Weight:	396.44
Target:	Bacterial; Antibiotic; Beta-lactamase
Pathway:	Anti-infection
Storage:	4°C, protect from light, stored under nitrogen * In solvent : -80°C, 6 months; -20°C, 1 month (protect from light, stored under nitrogen)



SOLVENT & SOLUBILITY

In Vitro	DMSO : 100 mg/mL (252.24 mM; Need ultrasonic)																					
	<table border="1"> <thead> <tr> <th rowspan="2">Solvent</th> <th rowspan="2">Mass</th> <th colspan="3">Concentration</th> </tr> <tr> <th>1 mg</th> <th>5 mg</th> <th>10 mg</th> </tr> </thead> <tbody> <tr> <td rowspan="3">Preparing Stock Solutions</td> <td>1 mM</td> <td>2.5224 mL</td> <td>12.6122 mL</td> <td>25.2245 mL</td> </tr> <tr> <td>5 mM</td> <td>0.5045 mL</td> <td>2.5224 mL</td> <td>5.0449 mL</td> </tr> <tr> <td>10 mM</td> <td>0.2522 mL</td> <td>1.2612 mL</td> <td>2.5224 mL</td> </tr> </tbody> </table>	Solvent	Mass	Concentration			1 mg	5 mg	10 mg	Preparing Stock Solutions	1 mM	2.5224 mL	12.6122 mL	25.2245 mL	5 mM	0.5045 mL	2.5224 mL	5.0449 mL	10 mM	0.2522 mL	1.2612 mL	2.5224 mL
Solvent	Mass			Concentration																		
		1 mg	5 mg	10 mg																		
Preparing Stock Solutions	1 mM	2.5224 mL	12.6122 mL	25.2245 mL																		
	5 mM	0.5045 mL	2.5224 mL	5.0449 mL																		
	10 mM	0.2522 mL	1.2612 mL	2.5224 mL																		
	Please refer to the solubility information to select the appropriate solvent.																					
In Vivo	<ol style="list-style-type: none"> Add each solvent one by one: 10% DMSO >> 40% PEG300 >> 5% Tween-80 >> 45% saline Solubility: ≥ 2.5 mg/mL (6.31 mM); Clear solution Add each solvent one by one: 10% DMSO >> 90% (20% SBE-β-CD in saline) Solubility: ≥ 2.5 mg/mL (6.31 mM); Clear solution Add each solvent one by one: 10% DMSO >> 90% corn oil Solubility: ≥ 2.5 mg/mL (6.31 mM); Clear solution 																					

BIOLOGICAL ACTIVITY

Description	Cephalotin (Cephalotin) is a beta-lactam antibiotic, inhibits class C β-lactamase AmpC, with an K _i of 0.32 μM ^[1] .
IC₅₀ & Target	β-lactam

REFERENCES

Caution: Product has not been fully validated for medical applications. For research use only.

Tel: 609-228-6898

Fax: 609-228-5909

E-mail: tech@MedChemExpress.com

Address: 1 Deer Park Dr, Suite Q, Monmouth Junction, NJ 08852, USA