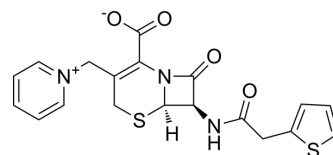


## Cephaloridine

Cat. No.:	HY-B2072
CAS No.:	50-59-9
Molecular Formula:	C <sub>19</sub> H <sub>17</sub> N <sub>3</sub> O <sub>4</sub> S <sub>2</sub>
Molecular Weight:	415.49
Target:	Bacterial; Antibiotic
Pathway:	Anti-infection
Storage:	Please store the product under the recommended conditions in the Certificate of Analysis.



### BIOLOGICAL ACTIVITY

<b>Description</b>	Cephaloridine is a broad-spectrum antibacterial antibiotic. Cephaloridine has certain dose-related nephrotoxicity <sup>[1][2]</sup> .
<b>IC<sub>50</sub> &amp; Target</b>	β-lactam
<b>In Vitro</b>	Cephaloridine can inhibit Staphylococcus aureus penicillin-sensitive strains, penicillin-resistant strains, Streptococcus pyogenes, Streptococcus pneumoniae, Corynebacterium diphtheriae, Clostridium septicum, and so on, with MICs of 0.05-1 μg/mL <sup>[1]</sup> . MCE has not independently confirmed the accuracy of these methods. They are for reference only.
<b>In Vivo</b>	Cephaloridine (50-500 mg/kg; i.m.) exhibits dose-related nephrotoxicity in rabbits and monkeys <sup>[2]</sup> . MCE has not independently confirmed the accuracy of these methods. They are for reference only.
<b>Animal Model:</b>	Rabbits and monkeys <sup>[2]</sup>
<b>Dosage:</b>	50, 100, 200 and 500 mg/kg
<b>Administration:</b>	i.m.
<b>Result:</b>	Resulted in marked alteration in renal function and necrosis of proximal tubules at 200 and 500 mg/kg. Did not appear to cause renal injury at 50 and 100 mg/kg.

### REFERENCES

- [1]. P. W. Muggleton, et al. Laboratory Evaluation of a New Antibiotic-Cephaloridine (Ceporin). Br Med J. 1964 Nov 14;2(5419):1234-7.
- [2]. Perkins RL, et al. Cephaloridine and cephalothin: comparative studies of potential nephrotoxicity. J Lab Clin Med. 1968 Jan;71(1):75-84.

---

**Caution: Product has not been fully validated for medical applications. For research use only.**

Tel: 609-228-6898

Fax: 609-228-5909

E-mail: [tech@MedChemExpress.com](mailto:tech@MedChemExpress.com)

Address: 1 Deer Park Dr, Suite Q, Monmouth Junction, NJ 08852, USA