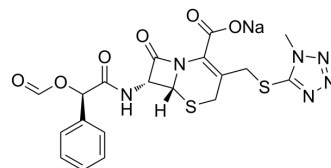


Cefamandole nafate

Cat. No.:	HY-B1166
CAS No.:	42540-40-9
Molecular Formula:	C ₁₉ H ₁₇ N ₆ NaO ₆ S ₂
Molecular Weight:	512.49
Target:	Bacterial; Antibiotic
Pathway:	Anti-infection
Storage:	-20°C, stored under nitrogen * The compound is unstable in solutions, freshly prepared is recommended.



SOLVENT & SOLUBILITY

In Vivo	<ol style="list-style-type: none"> Add each solvent one by one: PBS Solubility: 100 mg/mL (195.13 mM); Clear solution; Need ultrasonic Add each solvent one by one: 10% DMSO >> 40% PEG300 >> 5% Tween-80 >> 45% saline Solubility: ≥ 2.5 mg/mL (4.88 mM); Clear solution Add each solvent one by one: 10% DMSO >> 90% (20% SBE-β-CD in saline) Solubility: ≥ 2.5 mg/mL (4.88 mM); Clear solution Add each solvent one by one: 10% DMSO >> 90% corn oil Solubility: ≥ 2.5 mg/mL (4.88 mM); Clear solution
---------	---

BIOLOGICAL ACTIVITY

Description	Cefamandole nafate (Cefamandole formate sodium) is a second-generation broad-spectrum cephalosporin antibiotic ^[1] .
IC ₅₀ & Target	β-lactam
In Vitro	<p>Cefamandole nafate is shown to be rapidly converted to cefamandole in bacteriological media, with a half-life of less than 1 h at a pH of 7.0 or above. At pH 6.0, in log-phase inhibition experiments, however, Cefamandole nafate is more stable, allowing delineation of the activity between cefamandole and cefamandole nafate^[2].</p> <p>MCE has not independently confirmed the accuracy of these methods. They are for reference only.</p>
In Vivo	<p>The toxicity of Cefamandole nafate administered iv is studied in rats receiving doses of 250-1,000 mg/kg five days per week for one month^[1].</p> <p>After the administration of Cefamandole nafate for one month, there are no treatment-related adverse effects on growth, food consumption, clinical chemistry, hematology, or organ weights^[1].</p> <p>MCE has not independently confirmed the accuracy of these methods. They are for reference only.</p>

REFERENCES

[1]. J S Wold, et al. Toxicologic evaluation of cefamandole nafate in laboratory animals. J Infect Dis. 1978 May;137 Suppl:S51-S59.

Caution: Product has not been fully validated for medical applications. For research use only.

Tel: 609-228-6898

Fax: 609-228-5909

E-mail: tech@MedChemExpress.com

Address: 1 Deer Park Dr, Suite Q, Monmouth Junction, NJ 08852, USA