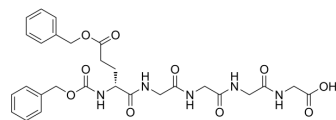


Cbz-D-Glu(Bn)-Gly-Gly-Gly-Gly

Cat. No.:	HY-47812
Molecular Formula:	C ₂₈ H ₃₃ N ₅ O ₁₀
Molecular Weight:	599.59
Target:	ADC Linker
Pathway:	Antibody-drug Conjugate/ADC Related
Storage:	-20°C, protect from light * In solvent : -80°C, 6 months; -20°C, 1 month (protect from light)



BIOLOGICAL ACTIVITY

Description	Cbz-(D-Glu)Bn-Gly-Gly-Gly-Gly is a cleavable ADC linker.
-------------	--

Caution: Product has not been fully validated for medical applications. For research use only.

Tel: 609-228-6898

Fax: 609-228-5909

E-mail: tech@MedChemExpress.com

Address: 1 Deer Park Dr, Suite Q, Monmouth Junction, NJ 08852, USA