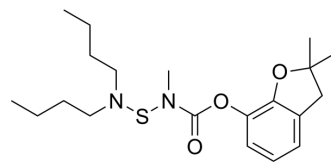


## Carbosulfan

<b>Cat. No.:</b>	HY-B2015		
<b>CAS No.:</b>	55285-14-8		
<b>Molecular Formula:</b>	C <sub>20</sub> H <sub>32</sub> N <sub>2</sub> O <sub>3</sub> S		
<b>Molecular Weight:</b>	380.54		
<b>Target:</b>	Cytochrome P450; Parasite		
<b>Pathway:</b>	Metabolic Enzyme/Protease; Anti-infection		
<b>Storage:</b>	Pure form	-20°C	3 years
		4°C	2 years
	In solvent	-80°C	6 months
		-20°C	1 month



### SOLVENT & SOLUBILITY

#### In Vitro

DMSO : ≥ 100 mg/mL (262.78 mM)  
 \* "≥" means soluble, but saturation unknown.

Preparing Stock Solutions	Solvent Concentration	Mass		
		1 mg	5 mg	10 mg
	1 mM	2.6278 mL	13.1392 mL	26.2784 mL
	5 mM	0.5256 mL	2.6278 mL	5.2557 mL
	10 mM	0.2628 mL	1.3139 mL	2.6278 mL

Please refer to the solubility information to select the appropriate solvent.

#### In Vivo

- Add each solvent one by one: 10% DMSO >> 40% PEG300 >> 5% Tween-80 >> 45% saline  
 Solubility: ≥ 2.5 mg/mL (6.57 mM); Clear solution
- Add each solvent one by one: 10% DMSO >> 90% (20% SBE-β-CD in saline)  
 Solubility: 2.5 mg/mL (6.57 mM); Suspended solution; Need ultrasonic
- Add each solvent one by one: 10% DMSO >> 90% corn oil  
 Solubility: ≥ 2.5 mg/mL (6.57 mM); Clear solution

### BIOLOGICAL ACTIVITY

#### Description

Carbosulfan inhibited relatively potently CYP3A4 and moderately CYP1A1/2 and CYP2C19 in pooled HLM (human livers). Carbosulfan activation is predominantly catalyzed in humans by CYP3A4.

#### IC<sub>50</sub> & Target

CYP1	CYP2	CYP3
------	------	------

---

## REFERENCES

---

[1]. Abass K, et al. Metabolism of carbosulfan II. Human interindividual variability in its in vitro hepatic biotransformation and the identification of the cytochrome P450 isoforms involved. Chem Biol Interact. 2010 May 14;185(3):163-173.

---

**Caution: Product has not been fully validated for medical applications. For research use only.**

Tel: 609-228-6898

Fax: 609-228-5909

E-mail: [tech@MedChemExpress.com](mailto:tech@MedChemExpress.com)

Address: 1 Deer Park Dr, Suite Q, Monmouth Junction, NJ 08852, USA