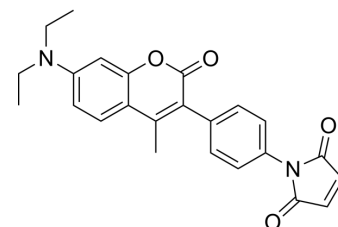


CPM

Cat. No.:	HY-D0069
CAS No.:	76877-33-3
Molecular Formula:	C ₂₄ H ₂₂ N ₂ O ₄
Molecular Weight:	402.44
Target:	Fluorescent Dye
Pathway:	Others
Storage:	-20°C, protect from light * In solvent : -80°C, 6 months; -20°C, 1 month (protect from light)



SOLVENT & SOLUBILITY

In Vitro

DMSO : 50 mg/mL (124.24 mM; ultrasonic and warming and heat to 60°C)

Preparing Stock Solutions	Solvent Concentration	Mass		
		1 mg	5 mg	10 mg
	1 mM	2.4848 mL	12.4242 mL	24.8484 mL
	5 mM	0.4970 mL	2.4848 mL	4.9697 mL
	10 mM	0.2485 mL	1.2424 mL	2.4848 mL

Please refer to the solubility information to select the appropriate solvent.

BIOLOGICAL ACTIVITY

Description

CPM is a maleimide derivative, acting as a blue fluorescent thiol-reactive dye. The excitation/emission maxima is 384/470 nm^[1].

REFERENCES

[1]. Grossman SH. Resonance energy transfer between the active sites of myocardial-type creatine kinase (isozyme MB). *Biochemistry*. 1983 Nov 8;22(23):5369-75.

Caution: Product has not been fully validated for medical applications. For research use only.

Tel: 609-228-6898

Fax: 609-228-5909

E-mail: tech@MedChemExpress.com

Address: 1 Deer Park Dr, Suite Q, Monmouth Junction, NJ 08852, USA