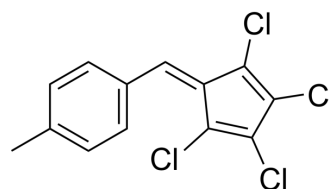


## CP26

<b>Cat. No.:</b>	HY-49116		
<b>CAS No.:</b>	500285-30-3		
<b>Molecular Formula:</b>	C <sub>13</sub> H <sub>8</sub> Cl <sub>4</sub>		
<b>Molecular Weight:</b>	306.01		
<b>Target:</b>	Others		
<b>Pathway:</b>	Others		
<b>Storage:</b>	Powder	-20°C	3 years
		4°C	2 years
	In solvent	-80°C	6 months
		-20°C	1 month



## SOLVENT & SOLUBILITY

### In Vitro

DMSO : 25 mg/mL (81.70 mM; ultrasonic and warming and heat to 60°C)

Concentration	Mass		
	1 mg	5 mg	10 mg
1 mM	3.2679 mL	16.3393 mL	32.6787 mL
5 mM	0.6536 mL	3.2679 mL	6.5357 mL
10 mM	0.3268 mL	1.6339 mL	3.2679 mL

Please refer to the solubility information to select the appropriate solvent.

## BIOLOGICAL ACTIVITY

### Description

CP26 is a small molecule inhibitor of protein dislocation from the ER lumen to the cytosol. CP26 targets the Hrd1 complex, inhibits ERAD, and induces ER stress<sup>[1]</sup>.

### In Vitro

CP26 exhibits a significant inhibitory activity against both DENV and ZIKV, providing substantial protection to the host cells against virus-induced cell death<sup>[1]</sup>.

CP26 inhibits the ubiquitination and degradation of misfolded ER proteins<sup>[1]</sup>.

MCE has not independently confirmed the accuracy of these methods. They are for reference only.

## REFERENCES

[1]. Jingjing Ruan, et al. A small molecule inhibitor of ER-to-cytosol protein dislocation exhibits anti-dengue and anti-Zika virus activity. Sci Rep. 2019 Jul 29;9(1):10901.

---

**Caution: Product has not been fully validated for medical applications. For research use only.**

Tel: 609-228-6898

Fax: 609-228-5909

E-mail: [tech@MedChemExpress.com](mailto:tech@MedChemExpress.com)

Address: 1 Deer Park Dr, Suite Q, Monmouth Junction, NJ 08852, USA