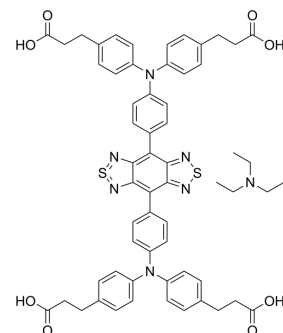


CH1055 triethylamine

Cat. No.:	HY-D1464A
Molecular Formula:	C ₆₀ H ₅₉ N ₇ O ₈ S ₂
Molecular Weight:	1070.28
Target:	Fluorescent Dye
Pathway:	Others
Storage:	-20°C, sealed storage, away from moisture * In solvent : -80°C, 6 months; -20°C, 1 month (sealed storage, away from moisture)



BIOLOGICAL ACTIVITY

Description

CH1055 triethylamine is a NIR-II fluorophore based on a synthetic 970-Da organic molecule. CH1055 triethylamine is a rapidly excreted dye (-90% excreted through the kidneys within 24 h). CH1055 triethylamine also allows targeted molecular imaging of tumors in vivo when conjugated with anti-EGFR Affibody^[1].

CUSTOMER VALIDATION

- Adv Funct Mater. 2023 Sep 3.

See more customer validations on www.MedChemExpress.com

REFERENCES

- [1]. Antaris AL, et al. A small-molecule dye for NIR-II imaging. Nat Mater. 2016;15(2):235-242.
- [2]. Antaris AL, et al. A small-molecule dye for NIR-II imaging. Nat Mater. 2016 Feb;15(2):235-42.

Caution: Product has not been fully validated for medical applications. For research use only.

Tel: 609-228-6898

Fax: 609-228-5909

E-mail: tech@MedChemExpress.com

Address: 1 Deer Park Dr, Suite Q, Monmouth Junction, NJ 08852, USA