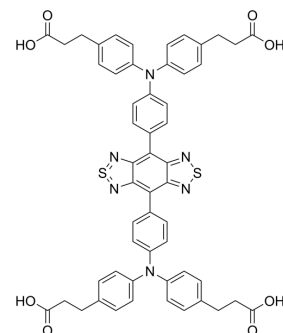


## CH1055

<b>Cat. No.:</b>	HY-D1464		
<b>CAS No.:</b>	1622250-38-7		
<b>Molecular Formula:</b>	C <sub>54</sub> H <sub>44</sub> N <sub>6</sub> O <sub>8</sub> S <sub>2</sub>		
<b>Molecular Weight:</b>	969.09		
<b>Target:</b>	Fluorescent Dye		
<b>Pathway:</b>	Others		
<b>Storage:</b>	Powder	-20°C	3 years
	In solvent	-80°C	6 months
		-20°C	1 month



### SOLVENT & SOLUBILITY

#### In Vitro

DMSO : 16.67 mg/mL (17.20 mM; Need ultrasonic)

Concentration	Mass		
	1 mg	5 mg	10 mg
1 mM	1.0319 mL	5.1595 mL	10.3190 mL
5 mM	0.2064 mL	1.0319 mL	2.0638 mL
10 mM	0.1032 mL	0.5159 mL	1.0319 mL

Please refer to the solubility information to select the appropriate solvent.

### BIOLOGICAL ACTIVITY

#### Description

CH1055 is a NIR-II fluorophore based on a synthetic 970-Da organic molecule. CH1055 is a rapidly excreted dye (~90% excreted through the kidneys within 24 h). CH1055 also allows targeted molecular imaging of tumors in vivo when conjugated with anti-EGFR Affibody<sup>[1]</sup>.

### CUSTOMER VALIDATION

- Adv Funct Mater. 2023 Sep 3.

See more customer validations on [www.MedChemExpress.com](http://www.MedChemExpress.com)

### REFERENCES

[1]. Antaris AL, et al. A small-molecule dye for NIR-II imaging. Nat Mater. 2016;15(2):235-242.

**Caution: Product has not been fully validated for medical applications. For research use only.**

Tel: 609-228-6898

Fax: 609-228-5909

E-mail: [tech@MedChemExpress.com](mailto:tech@MedChemExpress.com)

Address: 1 Deer Park Dr, Suite Q, Monmouth Junction, NJ 08852, USA