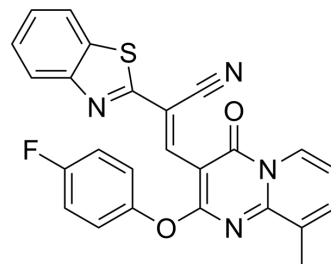


CCG-63808

Cat. No.:	HY-70075		
CAS No.:	620113-73-7		
Molecular Formula:	C ₂₅ H ₁₅ FN ₄ O ₂ S		
Molecular Weight:	454.48		
Target:	RGS Protein		
Pathway:	GPCR/G Protein		
Storage:	Powder	-20°C	3 years
		4°C	2 years
	In solvent	-80°C	2 years
		-20°C	1 year



SOLVENT & SOLUBILITY

In Vitro

DMSO : 1 mg/mL (2.20 mM; Need ultrasonic)

Concentration	Solvent	Mass		
		1 mg	5 mg	10 mg
1 mM		2.2003 mL	11.0017 mL	22.0034 mL
5 mM		---	---	---
10 mM		---	---	---

Please refer to the solubility information to select the appropriate solvent.

BIOLOGICAL ACTIVITY

Description

CCG-63808 is a reversible inhibitor of regulator of G-protein signaling (RGS) proteins.

CUSTOMER VALIDATION

- Am J Physiol Heart Circ Physiol. 2022 Oct 28.
- Mol Pharmacol. 2018 Jan;93(1):25-35.

See more customer validations on www.MedChemExpress.com

REFERENCES

Caution: Product has not been fully validated for medical applications. For research use only.

Tel: 609-228-6898

Fax: 609-228-5909

E-mail: tech@MedChemExpress.com

Address: 1 Deer Park Dr, Suite Q, Monmouth Junction, NJ 08852, USA