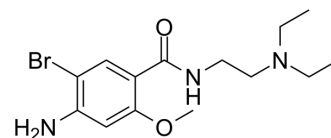


Bromopride

Cat. No.:	HY-B1164
CAS No.:	4093-35-0
Molecular Formula:	C ₁₄ H ₂₂ BrN ₃ O ₂
Molecular Weight:	344.25
Target:	Dopamine Receptor
Pathway:	GPCR/G Protein; Neuronal Signaling
Storage:	4°C, sealed storage, away from moisture and light * In solvent : -80°C, 6 months; -20°C, 1 month (sealed storage, away from moisture and light)



SOLVENT & SOLUBILITY

In Vitro

DMSO : 170 mg/mL (493.83 mM; Need ultrasonic)

Concentration	Solvent	Mass		
		1 mg	5 mg	10 mg
Preparing Stock Solutions	1 mM	2.9049 mL	14.5243 mL	29.0487 mL
	5 mM	0.5810 mL	2.9049 mL	5.8097 mL
	10 mM	0.2905 mL	1.4524 mL	2.9049 mL

Please refer to the solubility information to select the appropriate solvent.

BIOLOGICAL ACTIVITY

Description

Bromopride is a dopamine antagonist with prokinetic properties, widely used as an antiemetic.

Caution: Product has not been fully validated for medical applications. For research use only.

Tel: 609-228-6898

Fax: 609-228-5909

E-mail: tech@MedChemExpress.com

Address: 1 Deer Park Dr, Suite Q, Monmouth Junction, NJ 08852, USA