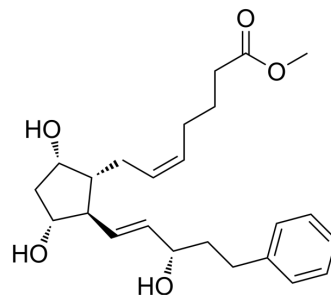


## Bimatoprost methyl ester

Cat. No.:	HY-B0191B
CAS No.:	38315-47-8
Molecular Formula:	C <sub>24</sub> H <sub>34</sub> O <sub>5</sub>
Molecular Weight:	402.52
Target:	Others
Pathway:	Others
Storage:	Please store the product under the recommended conditions in the Certificate of Analysis.



### BIOLOGICAL ACTIVITY

#### Description

Bimatoprost methyl ester is a proagent of [Bimatoprost](#) (HY-B0191)<sup>[1]</sup>.

### REFERENCES

[1]. Balapure AK, et al. Structural requirements for prostaglandin analog interaction with the ovine corpus luteum prostaglandin F<sub>2</sub> alpha receptor. Implications for development of a photoaffinity probe. *Biochem Pharmacol.* 1989 Jul 15;38(14):2375-81.

**Caution: Product has not been fully validated for medical applications. For research use only.**

Tel: 609-228-6898

Fax: 609-228-5909

E-mail: [tech@MedChemExpress.com](mailto:tech@MedChemExpress.com)

Address: 1 Deer Park Dr, Suite Q, Monmouth Junction, NJ 08852, USA