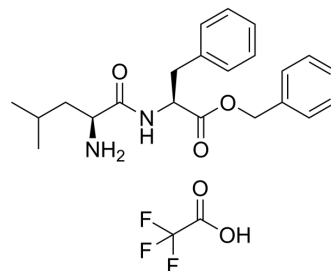


Benzyl L-leucyl-L-phenylalaninate TFA

| | |
|---------------------------|--|
| Cat. No.: | HY-79862 |
| CAS No.: | 70637-28-4 |
| Molecular Formula: | C ₂₄ H ₂₉ F ₃ N ₂ O ₅ |
| Molecular Weight: | 482.49 |
| Target: | Others |
| Pathway: | Others |
| Storage: | 4°C, sealed storage, away from moisture * In solvent : -80°C, 6 months; -20°C, 1 month (sealed storage, away from moisture) |



SOLVENT & SOLUBILITY

| | | | | | | |
|---|--|----------------------|-------------|-------------|-------------|--------------|
| In Vitro | DMSO : 25 mg/mL (51.81 mM); ultrasonic and warming and heat to 60°C | | | | | |
| | Preparing Stock Solutions | Solvent | Mass | 1 mg | 5 mg | 10 mg |
| | | Concentration | | | | |
| | | 1 mM | | 2.0726 mL | 10.3629 mL | 20.7258 mL |
| | | 5 mM | | 0.4145 mL | 2.0726 mL | 4.1452 mL |
| 10 mM | | 0.2073 mL | 1.0363 mL | 2.0726 mL | | |
| Please refer to the solubility information to select the appropriate solvent. | | | | | | |
| In Vivo | <ol style="list-style-type: none"> Add each solvent one by one: 10% DMSO >> 90% corn oil Solubility: ≥ 25 mg/mL (51.81 mM); Clear solution Add each solvent one by one: 10% DMSO >> 40% PEG300 >> 5% Tween-80 >> 45% saline Solubility: ≥ 2.5 mg/mL (5.18 mM); Clear solution Add each solvent one by one: 10% DMSO >> 90% (20% SBE-β-CD in saline) Solubility: ≥ 2.5 mg/mL (5.18 mM); Clear solution | | | | | |

BIOLOGICAL ACTIVITY

| | |
|--------------------|---|
| Description | Benzyl L-leucyl-L-phenylalaninate TFA is a peptide ^[1] . |
|--------------------|---|

REFERENCES

[1]. Johnson HWB, et al. Required Immunoproteasome Subunit Inhibition Profile for Anti-Inflammatory Efficacy and Clinical Candidate KZR-616 ((2 S,3 R)- N-((S)-3-(Cyclopent-1-en-1-yl)-1-((R)-2-methoxyiran-2-yl)-1-oxopropan-2-yl)-3-hydroxy-3-(4-methoxyphenyl)-2-((S)-2-(2-morpholinoacetamido)propanamido)propanamide). J Med Chem. 2018 Dec 27;61(24):11127-11143.

Caution: Product has not been fully validated for medical applications. For research use only.

Tel: 609-228-6898

Fax: 609-228-5909

E-mail: tech@MedChemExpress.com

Address: 1 Deer Park Dr, Suite Q, Monmouth Junction, NJ 08852, USA