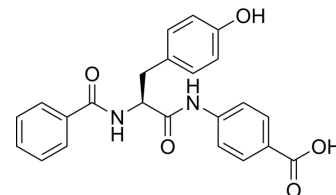


Bentiromide

Cat. No.:	HY-B1493
CAS No.:	37106-97-1
Molecular Formula:	C ₂₃ H ₂₀ N ₂ O ₅
Molecular Weight:	404.42
Target:	Others
Pathway:	Others
Storage:	Sealed storage, away from moisture
	Powder -80°C 2 years
	-20°C 1 year



* In solvent : -80°C, 6 months; -20°C, 1 month (sealed storage, away from moisture)

SOLVENT & SOLUBILITY

In Vitro

DMSO : ≥ 250 mg/mL (618.17 mM)

* "≥" means soluble, but saturation unknown.

	Solvent Concentration	Mass		
		1 mg	5 mg	10 mg
Preparing Stock Solutions	1 mM	2.4727 mL	12.3634 mL	24.7268 mL
	5 mM	0.4945 mL	2.4727 mL	4.9454 mL
	10 mM	0.2473 mL	1.2363 mL	2.4727 mL

Please refer to the solubility information to select the appropriate solvent.

In Vivo

- Add each solvent one by one: 10% DMSO >> 40% PEG300 >> 5% Tween-80 >> 45% saline
Solubility: ≥ 2.08 mg/mL (5.14 mM); Clear solution
- Add each solvent one by one: 10% DMSO >> 90% (20% SBE-β-CD in saline)
Solubility: ≥ 2.08 mg/mL (5.14 mM); Clear solution
- Add each solvent one by one: 10% DMSO >> 90% corn oil
Solubility: ≥ 2.08 mg/mL (5.14 mM); Clear solution

BIOLOGICAL ACTIVITY

Description

Bentiromide is a peptide that is broken down in the pancreas by chymotrypsin. The bentiromide test is an excellent means of confirming the diagnosis of pancreatic exocrine insufficiency by outpatient test of chymotrypsin function^[1].

REFERENCES

Caution: Product has not been fully validated for medical applications. For research use only.

Tel: 609-228-6898

Fax: 609-228-5909

E-mail: tech@MedChemExpress.com

Address: 1 Deer Park Dr, Suite Q, Monmouth Junction, NJ 08852, USA