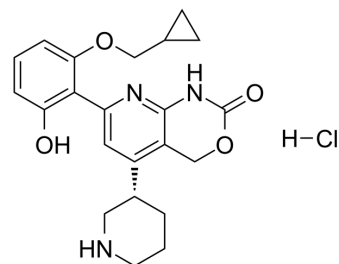


Bay 65-1942 hydrochloride

Cat. No.:	HY-50948
CAS No.:	600734-06-3
Molecular Formula:	C ₂₂ H ₂₆ ClN ₃ O ₄
Molecular Weight:	431.91
Target:	IKK
Pathway:	NF-κB
Storage:	4°C, sealed storage, away from moisture * In solvent : -80°C, 6 months; -20°C, 1 month (sealed storage, away from moisture)



SOLVENT & SOLUBILITY

In Vitro	DMSO : 50 mg/mL (115.76 mM; Need ultrasonic)						
	H ₂ O : 2.17 mg/mL (5.02 mM; Need ultrasonic)						
	Preparing Stock Solutions	Solvent Concentration	Mass	1 mg	5 mg	10 mg	
				1 mM	2.3153 mL	11.5765 mL	23.1530 mL
				5 mM	0.4631 mL	2.3153 mL	4.6306 mL
10 mM				0.2315 mL	1.1576 mL	2.3153 mL	
Please refer to the solubility information to select the appropriate solvent.							
In Vivo	1. Add each solvent one by one: 10% DMSO >> 40% PEG300 >> 5% Tween-80 >> 45% saline Solubility: ≥ 2.5 mg/mL (5.79 mM); Clear solution						
	2. Add each solvent one by one: 10% DMSO >> 90% (20% SBE-β-CD in saline) Solubility: ≥ 2.5 mg/mL (5.79 mM); Clear solution						
	3. Add each solvent one by one: 10% DMSO >> 90% corn oil Solubility: ≥ 2.5 mg/mL (5.79 mM); Clear solution						

BIOLOGICAL ACTIVITY

Description	Bay 65-1942 hydrochloride is an ATP-competitive and selective IKKβ inhibitor.
IC ₅₀ & Target	IKKβ
In Vitro	Delivery of Bay 65-1942 prior to ischemia significantly decreases left ventricular infarct size compared with animals receiving vehicle. Compared with sham animals, animals receiving vehicle have a significant increase in the infarct-to-area at risk (AAR) ratio (70.7±3.4 vs. 5.8±3.4%, P<0.05). This ratio is significantly reduced by treatment with Bay 65-1942 at each time point (prior to ischemia 42.7±4.1%, at reperfusion 42.7±7.5%, 2 h of reperfusion 29.4±5.2%; each group P<0.05 vs. vehicle).

Animals pretreated with Bay 65-1942 (n=3) have significantly attenuated CK-MB levels compared with those animals without treatment prior to IR (14,170 ±3,219 units, P<0.05 vs. vehicle)^[1].

MCE has not independently confirmed the accuracy of these methods. They are for reference only.

In Vivo

Inhibitors of MEK (AZD6244) and IKK (BAY 65-1942) are used at their IC₅₀ concentrations, as determined by a 48 hour MTS assay, which achieve sufficient inhibition of kinase activity. MYL-R cells are treated for 24 hours with AZD6244 (5 μM), BAY 65-1942 (10 μM), or a combination of these inhibitors at the same concentrations. AZD6244 and BAY 65-1942 demonstrate synergistic inhibition of cell viability at the dose combination (5 μM AZD6244+10 μM BAY 65-1942), which correlates with IC₇₅ (CI = 0.48±0.01). Synergism is also indicated at the IC₅₀ (CI = 0.56±0.09) and IC₉₀ (CI = 0.46±0.02) dose combinations reported by the software (CI values are the mean of three independent experiments, ± standard deviation). AZD6244 and BAY 65-1942 treatment induces 2- and 1.3-fold caspase 3/7 activation, respectively, compared to the DMSO-treated cells. Treatment with a combination of AZD6244 plus BAY 65-1942 leads to a 3.2-fold increase in caspase 3/7 activity^[2].

MCE has not independently confirmed the accuracy of these methods. They are for reference only.

PROTOCOL

Cell Assay ^[2]

Cell viability is determined by seeding MYL-R cells on a 96-well plate at 4×10⁴ cells/well in 100 μL RPMI growth medium supplemented with kinase inhibitors. Growth media and kinase inhibitors are replenished at 24 hours, and at 48 hours. 20 μL of MTS assay reagent is added to each well. The plate is returned to the incubator for approximately 1 hour and the absorbance at 490 nm is recorded. For combination index (CI) experiments, cells are grown and assayed. To determine AZD6244 and BAY 65-1942 (10 μM) dose-effects, cells are treated with a series of three-fold dilutions of each drug singly, or in combination while maintaining a constant ratio of 1:2, respectively. Cell viability results are analyzed to derive CI values. The CI values from three independent experiments are averaged^[2].

MCE has not independently confirmed the accuracy of these methods. They are for reference only.

Animal Administration ^[1]

Mice^[1]

Male C57BL/6 mice, 8-10 wk of age are used. To investigate IKKβ inhibition in myocardial IR injury, mice are subjected to 30 min of cardiac ischemia followed by varying periods of reperfusion. An intraperitoneal injection of Bay 65-1942 (5 mg/kg) at appropriate dosing time points is administered. Nontreatment groups receive a vehicle of 10% cremaphor in water. In treatment groups, Bay 65-1942 is delivered either prior to ischemia, at the time of reperfusion, or 2 h after reperfusion injury. Infarct size is measured 24 h after reperfusion injury in sham, vehicle, and each treatment group. To confirm myocardial injury, serum creatine kinase-muscle-brain fraction (CK-MB) levels are measured 1 h after reperfusion in animals pretreated with Bay 65-1942.

MCE has not independently confirmed the accuracy of these methods. They are for reference only.

CUSTOMER VALIDATION

- Cell Mol Immunol. 2023 Mar 2;1-14.
- Oncogene. 2016 Aug 4;35(31):4036-47.
- Int Immunopharmacol. 2020 Nov;88:107020.

See more customer validations on www.MedChemExpress.com

REFERENCES

[1]. Inhibition of IκB kinase-β protects dopamine neurons against lipopolysaccharide-induced neurotoxicity By Zhang, Feng; Qian, Li; Flood, Patrick M.; Shi, Jing-Shan; Hong, Jau-Shyong; Gao, Hui-Ming J Pharmacol Exp Ther. 2010 June; 333(3): 822-833.

Caution: Product has not been fully validated for medical applications. For research use only.

Tel: 609-228-6898

Fax: 609-228-5909

E-mail: tech@MedChemExpress.com

Address: 1 Deer Park Dr, Suite Q, Monmouth Junction, NJ 08852, USA