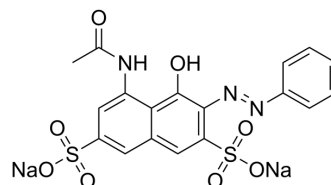


Azophloxine

Cat. No.:	HY-D1379
CAS No.:	3734-67-6
Molecular Formula:	C ₁₈ H ₁₃ N ₃ Na ₂ O ₈ S ₂
Molecular Weight:	509.42
Target:	Fluorescent Dye
Pathway:	Others
Storage:	Please store the product under the recommended conditions in the Certificate of Analysis.



BIOLOGICAL ACTIVITY

Description	Azophloxine, also known as acid red 1 (AR1), is a member of synthetic red azo dye family ^[1] .
In Vitro	Azophloxine is a member of synthetic red azo dye family ^[1] . MCE has not independently confirmed the accuracy of these methods. They are for reference only.

REFERENCES

[1]. Sharifi S, et al. Photophysical and Nonlinear Optical Properties of Azophloxine in Reverse Micelles. J Fluoresc. 2018;28(6):1439-1450.

Caution: Product has not been fully validated for medical applications. For research use only.

Tel: 609-228-6898

Fax: 609-228-5909

E-mail: tech@MedChemExpress.com

Address: 1 Deer Park Dr, Suite Q, Monmouth Junction, NJ 08852, USA