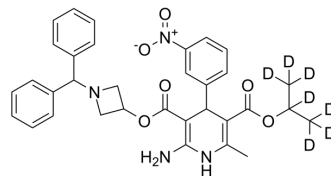


## Azelnidipine-d7

Cat. No.:	HY-B0023S
Molecular Formula:	C <sub>33</sub> H <sub>27</sub> D <sub>7</sub> N <sub>4</sub> O <sub>6</sub>
Molecular Weight:	589.69
Target:	Calcium Channel
Pathway:	Membrane Transporter/Ion Channel; Neuronal Signaling
Storage:	Please store the product under the recommended conditions in the Certificate of Analysis.



### BIOLOGICAL ACTIVITY

#### Description

Azelnidipine D7 is deuterium labeled Azelnidipine, which is a L-type calcium channel blocker.

**Caution: Product has not been fully validated for medical applications. For research use only.**

Tel: 609-228-6898

Fax: 609-228-5909

E-mail: [tech@MedChemExpress.com](mailto:tech@MedChemExpress.com)

Address: 1 Deer Park Dr, Suite Q, Monmouth Junction, NJ 08852, USA