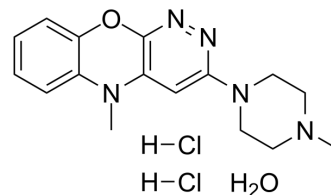


Azaphen dihydrochloride monohydrate

Cat. No.:	HY-A0022A
CAS No.:	63302-99-8
Molecular Formula:	C ₁₆ H ₂₃ Cl ₂ N ₅ O ₂
Molecular Weight:	388.29
Target:	Serotonin Transporter
Pathway:	Neuronal Signaling
Storage:	4°C, sealed storage, away from moisture * In solvent : -80°C, 6 months; -20°C, 1 month (sealed storage, away from moisture)



SOLVENT & SOLUBILITY

In Vitro

H₂O : ≥ 100 mg/mL (257.54 mM)
 DMSO : 1 mg/mL (2.58 mM; Need ultrasonic)
 * "≥" means soluble, but saturation unknown.

Preparing Stock Solutions	Solvent Concentration	Mass		
		1 mg	5 mg	10 mg
	1 mM	2.5754 mL	12.8770 mL	25.7539 mL
	5 mM	0.5151 mL	2.5754 mL	5.1508 mL
	10 mM	0.2575 mL	1.2877 mL	2.5754 mL

Please refer to the solubility information to select the appropriate solvent.

In Vivo

1. Add each solvent one by one: PBS
 Solubility: 50 mg/mL (128.77 mM); Clear solution; Need ultrasonic

BIOLOGICAL ACTIVITY

Description

Pipofezine (Azafen or Azaphen) is a potent inhibitor of the reuptake of serotonin. IC₅₀ Value: Target: SSRIs. Pipofezine is a tricyclic antidepressant (TCA) approved in Russia for the treatment of depression.

CUSTOMER VALIDATION

- Biochim Biophys Acta Gen Subj. 2022 Jan 20;130093.

See more customer validations on www.MedChemExpress.com

REFERENCES

- [1]. Shinaev NN, Akzhigitov RG. Azaphen: a return to clinical practice. Zh Nevrol Psikhiatr Im S S Korsakova. 2005;105(10):55-6.
- [2]. Ignatowicz L, Ignatowicz R, Wdowiak MW, Jaremko A. Azaphen in the treatment of enuresis in children. Psychiatr Pol. 1977 Jan-Feb;11(1):29-33.
- [3]. Liberman SS, Sharova SA. A comparison of the effect of the tricyclic antidepressants azaphen and imizin on the gastrointestinal tracts of experimental animals. Farmakol Toksikol. 1975 Jan-Feb;38(1):29-32.
- [4]. Misurec J, Náhunek K, Kamenická V, Chmelar M. Proceedings: Influence of azaphen, a new antidepressive drug, on the human EEG. Act Nerv Super (Praha). 1974;16(4):245-6.
-

Caution: Product has not been fully validated for medical applications. For research use only.

Tel: 609-228-6898

Fax: 609-228-5909

E-mail: tech@MedChemExpress.com

Address: 1 Deer Park Dr, Suite Q, Monmouth Junction, NJ 08852, USA