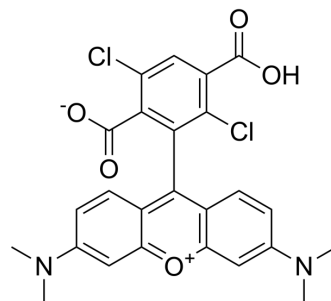


## 1,4-Dichloro 6-carboxytetramethylrhodamine

|                    |   |
|--------------------|---|
| Cat. No.:          | HY-D1043  |
| CAS No.:           | 407581-83-3   |
| Molecular Formula: | C <sub>25</sub> H <sub>20</sub> Cl <sub>2</sub> N <sub>2</sub> O <sub>5</sub>             |
| Molecular Weight:  | 499.34  |
| Target:            | Fluorescent Dye   |
| Pathway:           | Others  |
| Storage:           | Please store the product under the recommended conditions in the Certificate of Analysis. |



### BIOLOGICAL ACTIVITY

#### Description

1,4-Dichloro 6-carboxytetramethylrhodamine is a fluorescence labeling agent (Ex=541 nm, Em=568 nm).

**Caution: Product has not been fully validated for medical applications. For research use only.**

Tel: 609-228-6898

Fax: 609-228-5909

E-mail: [tech@MedChemExpress.com](mailto:tech@MedChemExpress.com)

Address: 1 Deer Park Dr, Suite Q, Monmouth Junction, NJ 08852, USA