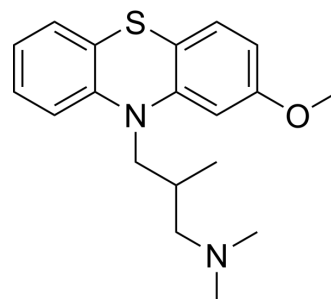


## (±)-Levomepromazine

Cat. No.:	HY-19489		
CAS No.:	851-68-3		
Molecular Formula:	C <sub>19</sub> H <sub>24</sub> N <sub>2</sub> OS		
Molecular Weight:	328.47		
Target:	Others		
Pathway:	Others		
Storage:	Powder	-20°C	3 years
		4°C	2 years
	In solvent	-80°C	6 months
		-20°C	1 month



### SOLVENT & SOLUBILITY

#### In Vitro

DMSO : 50 mg/mL (152.22 mM; ultrasonic and warming and heat to 70°C)

Concentration	Mass		
	1 mg	5 mg	10 mg
1 mM	3.0444 mL	15.2221 mL	30.4442 mL
5 mM	0.6089 mL	3.0444 mL	6.0888 mL
10 mM	0.3044 mL	1.5222 mL	3.0444 mL

Please refer to the solubility information to select the appropriate solvent.

### BIOLOGICAL ACTIVITY

#### Description

(±)-Levomepromazine is the racemate of Levomepromazine. Levomepromazine is an orally active and potent antipsychotic agent<sup>[1]</sup>.

### REFERENCES

[1]. Sivaraman P, et al. Levomepromazine for schizophrenia. Cochrane Database Syst Rev. 2010 Oct 6;2010(10):CD007779.

**Caution: Product has not been fully validated for medical applications. For research use only.**

Tel: 609-228-6898

Fax: 609-228-5909

E-mail: tech@MedChemExpress.com

Address: 1 Deer Park Dr, Suite Q, Monmouth Junction, NJ 08852, USA