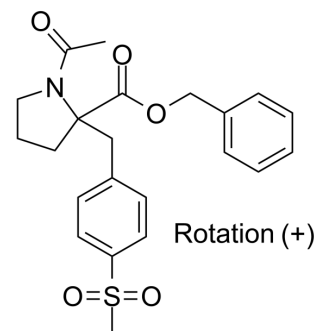


(+)-KCC2 blocker 1

Cat. No.:	HY-18172A
CAS No.:	1228439-71-1
Molecular Formula:	C ₂₂ H ₂₅ NO ₅ S
Molecular Weight:	415.5
Target:	Potassium Channel
Pathway:	Membrane Transporter/Ion Channel
Storage:	Please store the product under the recommended conditions in the Certificate of Analysis.



BIOLOGICAL ACTIVITY

Description	(+)-KCC2 blocker 1 is a selective K ⁺ -Cl ⁻ cotransporter KCC2 blocker with an IC ₅₀ of 0.4 μM. (+)-KCC2 blocker 1 is a benzyl proline and a enantiomer of KCC2 blocker 1 ^[1] .
IC₅₀ & Target	IC50: 0.4 μM (KCC2) ^[1]
In Vitro	(+)-KCC2 blocker 1 ((+)-13), a enantiomers of KCC2 blocker 1, has a 100-fold difference in potency compare with enantiomer (-)-KCC2 blocker 1 ((-)-13) ^[1] . MCE has not independently confirmed the accuracy of these methods. They are for reference only.

REFERENCES

[1]. Pégurier C, et al. Benzyl proline derivatives as novel selective KCC2 blockers. *Bioorg Med Chem Lett*. 2010 Apr 15;20(8):2542-5.

Caution: Product has not been fully validated for medical applications. For research use only.

Tel: 609-228-6898

Fax: 609-228-5909

E-mail: tech@MedChemExpress.com

Address: 1 Deer Park Dr, Suite Q, Monmouth Junction, NJ 08852, USA