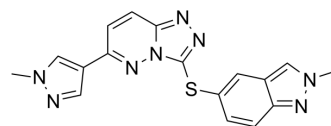


## c-Met inhibitor 1

Cat. No.:	HY-15735		
CAS No.:	1357072-61-7		
Molecular Formula:	C <sub>17</sub> H <sub>14</sub> N <sub>8</sub> S		
Molecular Weight:	362.41		
Target:	c-Met/HGFR		
Pathway:	Protein Tyrosine Kinase/RTK		
Storage:	Powder	-20°C	3 years
		4°C	2 years
	In solvent	-80°C	2 years
		-20°C	1 year



### SOLVENT & SOLUBILITY

#### In Vitro

DMSO : 20 mg/mL (55.19 mM; Need ultrasonic)

Preparing Stock Solutions	Solvent Concentration	Mass		
		1 mg	5 mg	10 mg
	1 mM	2.7593 mL	13.7965 mL	27.5931 mL
	5 mM	0.5519 mL	2.7593 mL	5.5186 mL
	10 mM	0.2759 mL	1.3797 mL	2.7593 mL

Please refer to the solubility information to select the appropriate solvent.

#### In Vivo

- Add each solvent one by one: 10% DMSO >> 40% PEG300 >> 5% Tween-80 >> 45% saline  
Solubility: ≥ 2 mg/mL (5.52 mM); Clear solution
- Add each solvent one by one: 10% DMSO >> 90% (20% SBE-β-CD in saline)  
Solubility: ≥ 2 mg/mL (5.52 mM); Clear solution
- Add each solvent one by one: 10% DMSO >> 90% corn oil  
Solubility: ≥ 2 mg/mL (5.52 mM); Clear solution

### BIOLOGICAL ACTIVITY

#### Description

c-Met inhibitor 1 is an inhibitor of the c-Met receptor signaling pathway useful for the treatment of cancer including gastric, glioblastoma, and pancreatic cancer. IC50 value: Target: c-Met More details please refer to Patent WO 2012015677 A1.

### REFERENCES

**Caution: Product has not been fully validated for medical applications. For research use only.**

Tel: 609-228-6898

Fax: 609-228-5909

E-mail: [tech@MedChemExpress.com](mailto:tech@MedChemExpress.com)

Address: 1 Deer Park Dr, Suite Q, Monmouth Junction, NJ 08852, USA