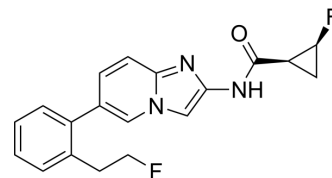


c-ABL-IN-5

Cat. No.:	HY-156102
Molecular Formula:	C ₁₉ H ₁₇ F ₂ N ₃ O
Molecular Weight:	341.35
Target:	Bcr-Abl
Pathway:	Protein Tyrosine Kinase/RTK
Storage:	Please store the product under the recommended conditions in the Certificate of Analysis.



BIOLOGICAL ACTIVITY

Description	c-ABL-IN-5 is a selective c-Abl inhibitor with neuroprotective effects. c-ABL-IN-5 has blood-brain barrier penetrability, metabolic stability and good pharmacokinetic properties. When c-ABL-IN-5 is labeled with [18F] (compound [18F]3), it can be used as a tracer to evaluate disease-modifying efficacy by complementary positron emission tomography (PET). c-ABL-IN-5 can be used in the study of neurodegenerative diseases such as Parkinson's disease (PD) ^[1] .
IC ₅₀ & Target	c-Abl ^[1]

REFERENCES

[1]. Stéen E.J.L., et al. Development of 18F-Labeled PET Tracer Candidates for Imaging of the Abelson Non-receptor Tyrosine Kinase in Parkinson's Disease. J Med Chem. 2023 Sep 15. .

Caution: Product has not been fully validated for medical applications. For research use only.

Tel: 609-228-6898

Fax: 609-228-5909

E-mail: tech@MedChemExpress.com

Address: 1 Deer Park Dr, Suite Q, Monmouth Junction, NJ 08852, USA