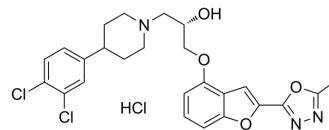


## Wf-516 hydrochloride

Cat. No.:	HY-19417
CAS No.:	310392-93-9
Molecular Formula:	C <sub>25</sub> H <sub>26</sub> Cl <sub>3</sub> N <sub>3</sub> O <sub>4</sub>
Molecular Weight:	538.85
Target:	Serotonin Transporter; 5-HT Receptor
Pathway:	Neuronal Signaling; GPCR/G Protein
Storage:	Please store the product under the recommended conditions in the Certificate of Analysis.



### BIOLOGICAL ACTIVITY

#### Description

Wf-516 hydrochloride is an inhibitor of 5-HT reuptake, and an antagonist of 5-HT<sub>1A</sub> and 5-HT<sub>2A</sub> receptors, with K<sub>i</sub> of 5 nM and 40 nM for 5-HT<sub>1A</sub> receptor and 5-HT<sub>2A</sub> receptor in humans, respectively. Wf-516 hydrochloride has potent antidepressant activity.

### REFERENCES

- [1]. El Mansari M, et al. In vivo electrophysiological assessment of the putative antidepressant Wf-516 in the rat raphe dorsalis, locus coeruleus and hippocampus. *Naunyn-Schmiedeberg's Arch Pharmacol.* 2008 Jan;376(5):351-61. Epub 2007 Nov 30.
- [2]. Saijo T, et al. Presynaptic selectivity of a ligand for serotonin 1A receptors revealed by in vivo PET assays of rat brain. *PLoS One.* 2012;7(8):e42589.

**Caution: Product has not been fully validated for medical applications. For research use only.**

Tel: 609-228-6898

Fax: 609-228-5909

E-mail: [tech@MedChemExpress.com](mailto:tech@MedChemExpress.com)

Address: 1 Deer Park Dr, Suite Q, Monmouth Junction, NJ 08852, USA