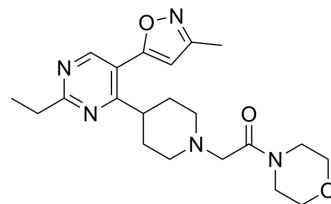


WLB-89462

Cat. No.:	HY-155992
CAS No.:	2849471-75-4
Molecular Formula:	C ₂₁ H ₂₉ N ₅ O ₃
Molecular Weight:	399.49
Target:	Sigma Receptor
Pathway:	Neuronal Signaling
Storage:	Please store the product under the recommended conditions in the Certificate of Analysis.



BIOLOGICAL ACTIVITY

Description	WLB-89462 (Compound 20c) is a selective σ_2 receptor ligand (K_i : 13 nM). WLB-89462 has neuroprotective activity. WLB-89462 improves short-term memory impairment induced by A β peptide in rats. WLB-89462 has good ADMET profile (good solubility, no CYP inhibition, good metabolic stability, high permeability, brain penetration, and high oral exposure in rodents) ^[1] .
IC ₅₀ & Target	Ki: 13 nM (σ_2 receptor) ^[1]

REFERENCES

[1]. Christmann U, et al. Discovery of WLB-89462, a New Drug-like and Highly Selective σ_2 Receptor Ligand with Neuroprotective Properties. J Med Chem. 2023 Sep 14;66(17):12499-12519.

Caution: Product has not been fully validated for medical applications. For research use only.

Tel: 609-228-6898

Fax: 609-228-5909

E-mail: tech@MedChemExpress.com

Address: 1 Deer Park Dr, Suite Q, Monmouth Junction, NJ 08852, USA