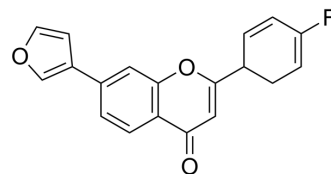


## Tubulin/PARP-IN-1

Cat. No.:	HY-157165
Molecular Formula:	C <sub>19</sub> H <sub>13</sub> FO <sub>3</sub>
Molecular Weight:	308.3
Target:	Microtubule/Tubulin; PARP
Pathway:	Cell Cycle/DNA Damage; Cytoskeleton; Epigenetics
Storage:	Please store the product under the recommended conditions in the Certificate of Analysis.



### BIOLOGICAL ACTIVITY

<b>Description</b>	Tubulin/PARP-IN-1 (compound 14) is a dual PARP-tubulin inhibitor with activity against endometrial cancer. Tubulin/PARP-IN-1 inhibits PARP and tubulin with IC <sub>50</sub> s of 74 nM (PARP1), 109 nM (PARP2), and 1.4 μM (Microtubule/Tubulin), respectively. Tubulin/PARP-IN-1 can induce apoptosis and autophagy and cause cell cycle arrest in the G2/M phase <sup>[1]</sup> .
--------------------	--

<b>IC<sub>50</sub> &amp; Target</b>	IC <sub>50</sub> : 74 nM (PARP1), 109 nM (PARP2), 1.4 μM (Microtubule/Tubulin) <sup>[1]</sup>
-------------------------------------	---

### REFERENCES

[1]. Sharma S et al. Flavone-based dual PARP-Tubulin inhibitor manifesting efficacy against endometrial cancer. J Enzyme Inhib Med Chem. 2023 Dec;38(1):2276665.

**Caution: Product has not been fully validated for medical applications. For research use only.**

Tel: 609-228-6898

Fax: 609-228-5909

E-mail: tech@MedChemExpress.com

Address: 1 Deer Park Dr, Suite Q, Monmouth Junction, NJ 08852, USA