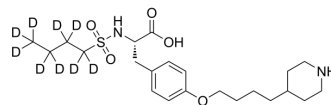


Tirofiban-d₉

Cat. No.:	HY-17369BS
CAS No.:	1332075-40-7
Molecular Formula:	C ₂₂ H ₂₇ D ₉ N ₂ O ₅ S
Molecular Weight:	449.65
Target:	Integrin; Isotope-Labeled Compounds
Pathway:	Cytoskeleton; Others
Storage:	Please store the product under the recommended conditions in the Certificate of Analysis.



BIOLOGICAL ACTIVITY

Description	Tirofiban-d ₉ is deuterium labeled Tirofiban.
In Vitro	Stable heavy isotopes of hydrogen, carbon, and other elements have been incorporated into drug molecules, largely as tracers for quantitation during the drug development process. Deuteration has gained attention because of its potential to affect the pharmacokinetic and metabolic profiles of drugs ^[1] . MCE has not independently confirmed the accuracy of these methods. They are for reference only.

REFERENCES

- [1]. Russak EM, et al. Impact of Deuterium Substitution on the Pharmacokinetics of Pharmaceuticals. *Ann Pharmacother*. 2019;53(2):211-216.
- [2]. Diaz JF, Cardenal R, Gomez-Manchero A, Sanchez-Gonzalez C. Safety and efficacy of tirofiban as adjunctive therapy for patients with ST-elevation myocardial infarction: a comparison versus placebo and abciximab. *Cardiovasc Hematol Agents Med Chem*. 2011 Jul 1;9(3):147-53.
- [3]. Valgimigli M, Biondi-Zoccai G, Tebaldi M et al. Tirofiban as adjunctive therapy for acute coronary syndromes and percutaneous coronary intervention: a meta-analysis of randomized trials. *Eur Heart J*. 2010 Jan;31(1):35-49.
- [4]. Valgimigli M, Tebaldi M. Safety evaluation of tirofiban. *Expert Opin Drug Saf*. 2010 Sep;9(5):801-19.
- [5]. van 't Hof AW, Valgimigli M. Defining the role of platelet glycoprotein receptor inhibitors in STEMI: focus on tirofiban. *Drugs*. 2009;69(1):85-100.
- [6]. Winter JP, Juergens CP. The role of tirofiban in the management of coronary artery disease. *Cardiovasc Hematol Disord Drug Targets*. 2008 Jun;8(2):138-46.

Caution: Product has not been fully validated for medical applications. For research use only.

Tel: 609-228-6898

Fax: 609-228-5909

E-mail: tech@MedChemExpress.com

Address: 1 Deer Park Dr, Suite Q, Monmouth Junction, NJ 08852, USA