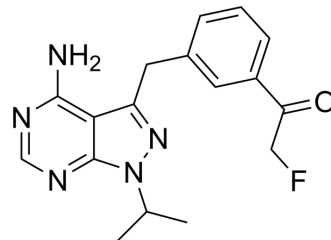


## T338C Src-IN-2

Cat. No.:	HY-16906
CAS No.:	1351927-00-8
Molecular Formula:	C <sub>17</sub> H <sub>18</sub> FN <sub>5</sub> O
Molecular Weight:	327.36
Target:	Src
Pathway:	Protein Tyrosine Kinase/RTK
Storage:	Please store the product under the recommended conditions in the Certificate of Analysis.



### BIOLOGICAL ACTIVITY

<b>Description</b>	T338C Src-IN-2 is a potent mutant c-Src T338C kinase inhibitor with IC <sub>50</sub> of 317 nM; also inhibits T338C/V323A and T338C/V323S with IC <sub>50</sub> of 57 nM/19 nM.
--------------------	---

### REFERENCES

[1]. Garske AL, et al. Chemical genetic strategy for targeting protein kinases based on covalent complementarity. Proc Natl Acad Sci U S A. 2011 Sep 13;108(37):15046-52.

**Caution: Product has not been fully validated for medical applications. For research use only.**

Tel: 609-228-6898

Fax: 609-228-5909

E-mail: tech@MedChemExpress.com

Address: 1 Deer Park Dr, Suite Q, Monmouth Junction, NJ 08852, USA