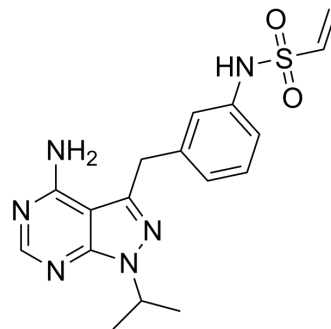


T338C Src-IN-1

Cat. No.:	HY-16905
CAS No.:	1351926-90-3
Molecular Formula:	C ₁₇ H ₂₀ N ₆ O ₂ S
Molecular Weight:	372.44
Target:	Src
Pathway:	Protein Tyrosine Kinase/RTK
Storage:	Please store the product under the recommended conditions in the Certificate of Analysis.



BIOLOGICAL ACTIVITY

Description

T338C Src-IN-1 is a potent mutant-Src T338C inhibitor; exhibited the most potent inhibition of T338C (IC₅₀=111 nM) relative to WT c-Src (10-fold increase).

REFERENCES

[1]. Garske AL, et al. Chemical genetic strategy for targeting protein kinases based on covalent complementarity. Proc Natl Acad Sci U S A. 2011 Sep 13;108(37):15046-52.

Caution: Product has not been fully validated for medical applications. For research use only.

Tel: 609-228-6898

Fax: 609-228-5909

E-mail: tech@MedChemExpress.com

Address: 1 Deer Park Dr, Suite Q, Monmouth Junction, NJ 08852, USA