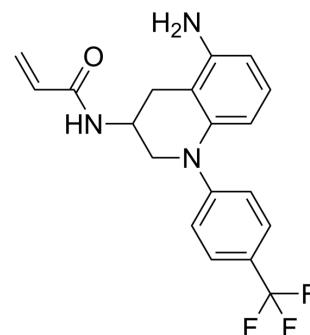


## SWTX-143

Cat. No.:	HY-155338	
CAS No.:	2766575-48-6	
Molecular Formula:	C <sub>19</sub> H <sub>18</sub> F <sub>3</sub> N <sub>3</sub> O	
Molecular Weight:	361.36	
Target:	YAP	
Pathway:	Stem Cell/Wnt	
Storage:	Powder	-20°C 3 years
	In solvent	-80°C 6 months
		-20°C 1 month



### SOLVENT & SOLUBILITY

#### In Vitro

DMSO : 125 mg/mL (345.92 mM; Need ultrasonic)

Concentration	Solvent	Mass		
		1 mg	5 mg	10 mg
Preparing Stock Solutions	1 mM	2.7673 mL	13.8366 mL	27.6732 mL
	5 mM	0.5535 mL	2.7673 mL	5.5346 mL
	10 mM	0.2767 mL	1.3837 mL	2.7673 mL

Please refer to the solubility information to select the appropriate solvent.

### BIOLOGICAL ACTIVITY

#### Description

SWTX-143 is a novel covalent YAP/TAZ-TEAD inhibitor that binds to the palmitoylation pocket of all four TEAD isoforms. SWTX-143 causes irreversible and specific inhibition of the transcriptional activity of YAP/TAZ-TEAD and shows antitumor activity<sup>[1]</sup>.

### REFERENCES

[1]. Hanne Hillen, et al. A novel irreversible TEAD inhibitor, SWTX-143, blocks Hippo pathway transcriptional output and causes tumor regression in preclinical mesothelioma models. Mol Cancer Ther. 2023 Sep 23.

**Caution: Product has not been fully validated for medical applications. For research use only.**

Tel: 609-228-6898

Fax: 609-228-5909

E-mail: tech@MedChemExpress.com

Address: 1 Deer Park Dr, Suite Q, Monmouth Junction, NJ 08852, USA