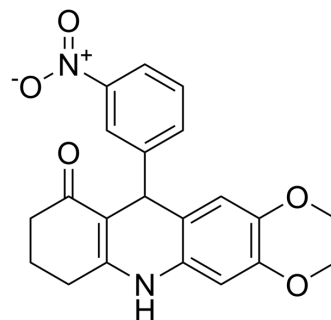


## SSE1806

|                    |   |
|--------------------|---|
| Cat. No.:          | HY-156088   |
| Molecular Formula: | C <sub>21</sub> H <sub>18</sub> N <sub>2</sub> O <sub>5</sub>                             |
| Molecular Weight:  | 378.38  |
| Target:            | Microtubule/Tubulin; Apoptosis  |
| Pathway:           | Cell Cycle/DNA Damage; Cytoskeleton; Apoptosis  |
| Storage:           | Please store the product under the recommended conditions in the Certificate of Analysis. |



## BIOLOGICAL ACTIVITY

### Description

SSE1806 is a derivative of podophyllotoxin (a natural antimitotic agent) and a microtubule/tubulin inhibitor with significant anticancer and antiproliferative activities. The GI<sub>50</sub> of SSE1806 on cancer cell growth ranges from 1.29-21.15 μM. SSE1806 causes mitotic abnormalities and G<sub>2</sub>/M phase arrest, increases p53 expression, and inhibits colon cancer organoid growth. SSE1806 is able to overcome multidrug resistance in cell lines overexpressing MDR-1<sup>[1]</sup>.

## REFERENCES

[1]. Firdous F, et al. Design, Synthesis, and Biological Evaluation of SSE1806, a Microtubule Destabilizer That Overcomes Multidrug Resistance[J]. ACS Medicinal Chemistry Letters, 2023...

**Caution: Product has not been fully validated for medical applications. For research use only.**

Tel: 609-228-6898

Fax: 609-228-5909

E-mail: tech@MedChemExpress.com

Address: 1 Deer Park Dr, Suite Q, Monmouth Junction, NJ 08852, USA