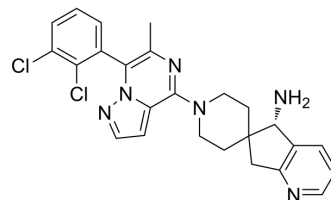


SHP2-IN-17

Cat. No.:	HY-155273
CAS No.:	2941498-93-5
Molecular Formula:	C ₂₅ H ₂₄ Cl ₂ N ₆
Molecular Weight:	479.4
Target:	SHP2
Pathway:	Protein Tyrosine Kinase/RTK
Storage:	Please store the product under the recommended conditions in the Certificate of Analysis.



BIOLOGICAL ACTIVITY

Description

SHP2-IN-17 (compound 192) is a SHP2 inhibitor with an IC₅₀ value of 2 nM. SHP2-IN-17 can be used for glioblastoma research^[1].

REFERENCES

[1]. Sabnis RW. Novel Pyrazolopyrazine Compounds as SHP2 Inhibitors for Treating Glioblastoma. ACS Med Chem Lett. 2023 Sep 19;14(10):1336-1337.

Caution: Product has not been fully validated for medical applications. For research use only.

Tel: 609-228-6898

Fax: 609-228-5909

E-mail: tech@MedChemExpress.com

Address: 1 Deer Park Dr, Suite Q, Monmouth Junction, NJ 08852, USA