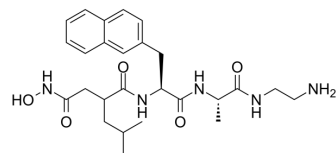


## (S,S)-TAPI-1

Cat. No.:	HY-16657A		
CAS No.:	171235-71-5		
Molecular Formula:	C <sub>26</sub> H <sub>37</sub> N <sub>5</sub> O <sub>5</sub>		
Molecular Weight:	499.6		
Target:	MMP		
Pathway:	Metabolic Enzyme/Protease		
Storage:	Powder	-20°C	3 years
		4°C	2 years
	In solvent	-80°C	6 months
		-20°C	1 month



### SOLVENT & SOLUBILITY

In Vitro	DMSO : 25 mg/mL (50.04 mM; Need ultrasonic)					
		Solvent Concentration	Mass	1 mg	5 mg	10 mg
	Preparing Stock Solutions	1 mM		2.0016 mL	10.0080 mL	20.0160 mL
		5 mM		0.4003 mL	2.0016 mL	4.0032 mL
10 mM			0.2002 mL	1.0008 mL	2.0016 mL	
Please refer to the solubility information to select the appropriate solvent.						
In Vivo	1. Add each solvent one by one: 10% DMSO >> 40% PEG300 >> 5% Tween-80 >> 45% saline Solubility: ≥ 1.67 mg/mL (3.34 mM); Clear solution					
	2. Add each solvent one by one: 10% DMSO >> 90% (20% SBE-β-CD in saline) Solubility: ≥ 1.67 mg/mL (3.34 mM); Clear solution					
	3. Add each solvent one by one: 10% DMSO >> 90% corn oil Solubility: ≥ 1.67 mg/mL (3.34 mM); Clear solution					

### BIOLOGICAL ACTIVITY

Description	(S,S)-TAPI-1 is an isomer of TAPI-1. TAPI-1 is a TACE (ADAM17) inhibitor and blocks the shedding of several cell surface proteins. TAPI-1 is also a metalloproteinase (MMP) inhibitor <sup>[1][2]</sup> .
IC <sub>50</sub> & Target	TACE (ADAM17), MMP <sup>[1][2]</sup>

### REFERENCES

---

[1]. Bae EH, et al. Tumor necrosis factor  $\alpha$ -converting enzyme inhibitor attenuates lipopolysaccharide-induced reactive oxygen species and mitogen-activated protein kinase expression in human renal proximal tubule epithelial cells. Korean J Physiol Pharmacol. 2

[2]. Moss ML, et al. Recent Advances in ADAM17 Research: A Promising Target for Cancer and Inflammation. Mediators Inflamm. 2017;2017:9673537.

---

**Caution: Product has not been fully validated for medical applications. For research use only.**

Tel: 609-228-6898

Fax: 609-228-5909

E-mail: [tech@MedChemExpress.com](mailto:tech@MedChemExpress.com)

Address: 1 Deer Park Dr, Suite Q, Monmouth Junction, NJ 08852, USA