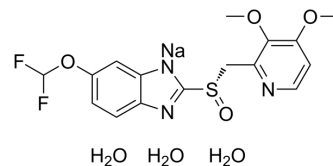


S-Pantoprazole sodium trihydrate

Cat. No.:	HY-17507E
CAS No.:	1416988-58-3
Molecular Formula:	C ₁₆ H ₂₀ F ₂ N ₃ NaO ₇ S
Molecular Weight:	459.4
Target:	Proton Pump; Bacterial
Pathway:	Membrane Transporter/Ion Channel; Anti-infection
Storage:	Please store the product under the recommended conditions in the Certificate of Analysis.



BIOLOGICAL ACTIVITY

Description

S-Pantoprazole (sodium trihydrate) is related to Pantoprazole (HY-17507) that plays an important roles in gastric acid secretion disorder-related diseases, or as proton pump inhibitor^[1].

REFERENCES

[1]. Zong Zaiwei, et al. S-pantoprazole sodium trihydrate and its preparation and application. China, CN102584790 A 2012-07-18

Caution: Product has not been fully validated for medical applications. For research use only.

Tel: 609-228-6898

Fax: 609-228-5909

E-mail: tech@MedChemExpress.com

Address: 1 Deer Park Dr, Suite Q, Monmouth Junction, NJ 08852, USA