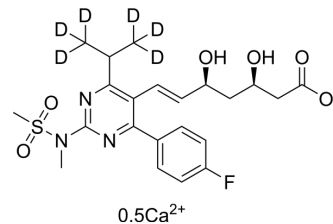


Rosuvastatin-d₆ calcium

Cat. No.: HY-17504S
Molecular Formula: C₂₂H₂₁D₆FN₃O₆S · 1/2 Ca
Molecular Weight: 506.61
Target: HMG-CoA Reductase (HMGCR); Autophagy; Isotope-Labeled Compounds
Pathway: Metabolic Enzyme/Protease; Autophagy; Others
Storage: -20°C, sealed storage, away from moisture and light
* The compound is unstable in solutions, freshly prepared is recommended.



BIOLOGICAL ACTIVITY

Description
Rosuvastatin-d ₆ (calcium) is deuterium labeled Rosuvastatin.

Caution: Product has not been fully validated for medical applications. For research use only.

Tel: 609-228-6898

Fax: 609-228-5909

E-mail: tech@MedChemExpress.com

Address: 1 Deer Park Dr, Suite Q, Monmouth Junction, NJ 08852, USA