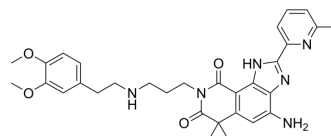


RSV L-protein-IN-5

Cat. No.:	HY-154968
CAS No.:	851658-28-1
Molecular Formula:	C ₃₁ H ₃₆ N ₆ O ₄
Molecular Weight:	556.66
Target:	RSV
Pathway:	Anti-infection
Storage:	Please store the product under the recommended conditions in the Certificate of Analysis.



BIOLOGICAL ACTIVITY

Description	RSV L-protein-IN-5 (compound E) is a potent inhibitor of Respiratory syncytial virus (RSV) (EC ₅₀ =0.1 μM). RSV L-protein-IN-5 inhibits Polymerase (IC ₅₀ =0.66 μM) and blocks RSV mRNA synthesis by inhibiting guanylation of viral transcripts. RSV L-protein-IN-5 shows moderate cytotoxicity (CC ₅₀ =10.7 μM HEP-2) also exhibits activity and lowers virus titers in mouse models of RSV infection ^[1] .
IC ₅₀ & Target	EC ₅₀ : 0.1 μM () ^[1]

REFERENCES

[1]. Liuzzi M, et al. Inhibitors of respiratory syncytial virus replication target cotranscriptional mRNA guanylation by viral RNA-dependent RNA polymerase. J Virol. 2005 Oct;79(20):13105-15.

Caution: Product has not been fully validated for medical applications. For research use only.

Tel: 609-228-6898

Fax: 609-228-5909

E-mail: tech@MedChemExpress.com

Address: 1 Deer Park Dr, Suite Q, Monmouth Junction, NJ 08852, USA