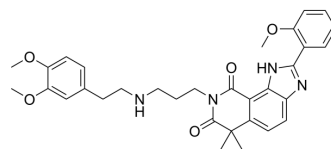


## RSV L-protein-IN-2

Cat. No.:	HY-154964
CAS No.:	774130-99-3
Molecular Formula:	C <sub>32</sub> H <sub>36</sub> N <sub>4</sub> O <sub>5</sub>
Molecular Weight:	556.65
Target:	RSV
Pathway:	Anti-infection
Storage:	Please store the product under the recommended conditions in the Certificate of Analysis.



### BIOLOGICAL ACTIVITY

Description	RSV L-protein-IN-2 (Compound A) is a noncompetitive RSV polymerase inhibitor (IC <sub>50</sub> : 4.5 μM). RSV L-protein-IN-2 shows antiviral activity against long RSV strains (EC <sub>50</sub> : 1.3 μM) <sup>[1]</sup> .
IC <sub>50</sub> & Target	4.5 μM (RSV polymerase) <sup>[1]</sup>

### REFERENCES

[1]. Liuzzi M, et al. Inhibitors of respiratory syncytial virus replication target cotranscriptional mRNA guanylation by viral RNA-dependent RNA polymerase. J Virol. 2005 Oct;79(20):13105-15.

**Caution: Product has not been fully validated for medical applications. For research use only.**

Tel: 609-228-6898

Fax: 609-228-5909

E-mail: tech@MedChemExpress.com

Address: 1 Deer Park Dr, Suite Q, Monmouth Junction, NJ 08852, USA