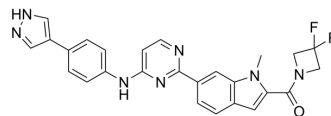


ROCK2-IN-6

Cat. No.:	HY-156592
CAS No.:	2260506-59-8
Molecular Formula:	C ₂₆ H ₂₁ F ₂ N ₇ O
Molecular Weight:	485.49
Target:	ROCK
Pathway:	Cell Cycle/DNA Damage; Cytoskeleton; Stem Cell/Wnt; TGF-beta/Smad
Storage:	Please store the product under the recommended conditions in the Certificate of Analysis.



BIOLOGICAL ACTIVITY

Description

ROCK2-IN-6 (Comp A) is a selective ROCK2 inhibitor, can be used for ROCK mediated diseases, autoimmune diseases and inflammation research^[1].

REFERENCES

[1]. Wang HJ, et.al Solid form of rho-associated protein kinase inhibitor or solvate thereof, preparation method and use thereof

Caution: Product has not been fully validated for medical applications. For research use only.

Tel: 609-228-6898

Fax: 609-228-5909

E-mail: tech@MedChemExpress.com

Address: 1 Deer Park Dr, Suite Q, Monmouth Junction, NJ 08852, USA