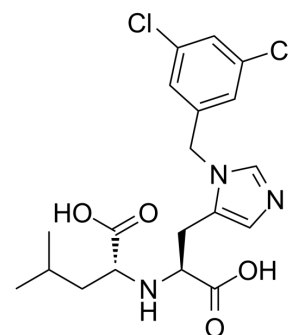


(R)-MLN-4760

Cat. No.:	HY-19414A		
CAS No.:	305335-29-9		
Molecular Formula:	C ₁₉ H ₂₃ Cl ₂ N ₃ O ₄		
Molecular Weight:	428.31		
Target:	Angiotensin-converting Enzyme (ACE)		
Pathway:	Metabolic Enzyme/Protease		
Storage:	Powder	-20°C	3 years
		4°C	2 years
	In solvent	-80°C	2 years
		-20°C	1 year



SOLVENT & SOLUBILITY

In Vitro

DMSO : 14.29 mg/mL (33.36 mM; Need ultrasonic)

Preparing Stock Solutions	Solvent Concentration	Mass		
		1 mg	5 mg	10 mg
	1 mM	2.3348 mL	11.6738 mL	23.3476 mL
	5 mM	0.4670 mL	2.3348 mL	4.6695 mL
	10 mM	0.2335 mL	1.1674 mL	2.3348 mL

Please refer to the solubility information to select the appropriate solvent.

BIOLOGICAL ACTIVITY

Description

(R)-MLN-4760, the R-enantiomer of MLN-4760, is an ACE2 inhibitor, with an IC₅₀ of 8.4 μM. (R)-MLN-4760 is the less active isomer^[1].

IC₅₀ & Target

IC₅₀: 8.4 nM (ACE2)^[1]

In Vitro

(R)-MLN-4760 (compound 16RS) is the less active isomer of MLN-4760^[1].
MCE has not independently confirmed the accuracy of these methods. They are for reference only.

REFERENCES

[1]. Dales NA, et, al. Substrate-based design of the first class of angiotensin-converting enzyme-related carboxypeptidase (ACE2) inhibitors. J Am Chem Soc. 2002 Oct 9;124(40):11852-3.

Caution: Product has not been fully validated for medical applications. For research use only.

Tel: 609-228-6898

Fax: 609-228-5909

E-mail: tech@MedChemExpress.com

Address: 1 Deer Park Dr, Suite Q, Monmouth Junction, NJ 08852, USA