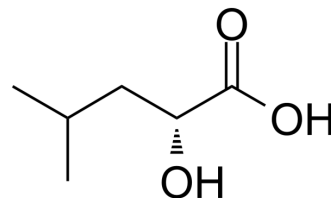


## (R)-Leucic acid

<b>Cat. No.:</b>	HY-30216		
<b>CAS No.:</b>	20312-37-2		
<b>Molecular Formula:</b>	C <sub>6</sub> H <sub>12</sub> O <sub>3</sub>		
<b>Molecular Weight:</b>	132.16		
<b>Target:</b>	Endogenous Metabolite		
<b>Pathway:</b>	Metabolic Enzyme/Protease		
<b>Storage:</b>	Powder	-20°C	3 years
		4°C	2 years
	In solvent	-80°C	6 months
		-20°C	1 month



### SOLVENT & SOLUBILITY

#### In Vitro

DMSO : 100 mg/mL (756.66 mM; Need ultrasonic)  
 H<sub>2</sub>O : 100 mg/mL (756.66 mM; Need ultrasonic)

	Solvent Concentration	Mass		
		1 mg	5 mg	10 mg
Preparing Stock Solutions	1 mM	7.5666 mL	37.8329 mL	75.6659 mL
	5 mM	1.5133 mL	7.5666 mL	15.1332 mL
	10 mM	0.7567 mL	3.7833 mL	7.5666 mL

Please refer to the solubility information to select the appropriate solvent.

#### In Vivo

- Add each solvent one by one: PBS  
Solubility: 33.33 mg/mL (252.19 mM); Clear solution; Need ultrasonic
- Add each solvent one by one: 10% DMSO >> 40% PEG300 >> 5% Tween-80 >> 45% saline  
Solubility: ≥ 2.5 mg/mL (18.92 mM); Clear solution
- Add each solvent one by one: 10% DMSO >> 90% (20% SBE-β-CD in saline)  
Solubility: ≥ 2.5 mg/mL (18.92 mM); Clear solution
- Add each solvent one by one: 10% DMSO >> 90% corn oil  
Solubility: ≥ 2.5 mg/mL (18.92 mM); Clear solution

### BIOLOGICAL ACTIVITY

#### Description

(R)-Leucic acid is an amino acid metabolite<sup>[1]</sup>.

### REFERENCES

**Caution: Product has not been fully validated for medical applications. For research use only.**

Tel: 609-228-6898

Fax: 609-228-5909

E-mail: [tech@MedChemExpress.com](mailto:tech@MedChemExpress.com)

Address: 1 Deer Park Dr, Suite Q, Monmouth Junction, NJ 08852, USA