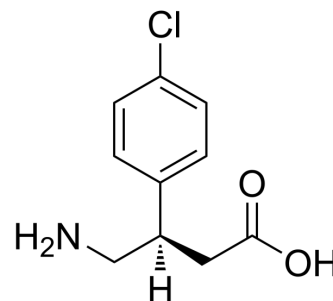


(R)-Baclofen

Cat. No.:	HY-17354		
CAS No.:	69308-37-8		
Molecular Formula:	C ₁₀ H ₁₂ ClNO ₂		
Molecular Weight:	213.66		
Target:	GABA Receptor		
Pathway:	Membrane Transporter/Ion Channel; Neuronal Signaling		
Storage:	Powder	-20°C	3 years
		4°C	2 years
	In solvent	-80°C	2 years
		-20°C	1 year



SOLVENT & SOLUBILITY

In Vitro

H₂O : 5 mg/mL (23.40 mM; Need ultrasonic)
 DMSO : 1 mg/mL (4.68 mM; ultrasonic and warming and heat to 80°C)

Preparing Stock Solutions	Solvent		Mass		
	Concentration		1 mg	5 mg	10 mg
	1 mM		4.6803 mL	23.4017 mL	46.8033 mL
	5 mM		0.9361 mL	4.6803 mL	9.3607 mL
	10 mM		0.4680 mL	2.3402 mL	4.6803 mL

Please refer to the solubility information to select the appropriate solvent.

In Vivo

1. Add each solvent one by one: PBS
 Solubility: 4.17 mg/mL (19.52 mM); Clear solution; Need ultrasonic and warming and heat to 60°C

BIOLOGICAL ACTIVITY

Description

(R)-Baclofen (Arbaclofen) is a selective GABAB receptor agonist^[1].

IC₅₀ & Target

GABAB receptor^[1]

In Vivo

(R)-Baclofen (STX209) suppresses audiogenic seizures in the Fmr1-knockout mouse on the seizure-resistant C57BL/6 background with an effective dose of 1 mg/kg^[5].
 Acute intraperitoneal administration of (R)-Baclofen (STX209) significantly reduces the percent of mice displaying seizures (seizure incidence), with a minimum effective dose (MED) of 1.5 mg/kg^[5].
 MCE has not independently confirmed the accuracy of these methods. They are for reference only.

CUSTOMER VALIDATION

- J Neurochem. 2022 Jul 1.
- Mol Med Rep. 2022 May;25(5):154.

See more customer validations on www.MedChemExpress.com

REFERENCES

- [1]. Hong YG, et al. Effects of phaclofen and the enantiomers of baclofen on cardiovascular responses to intrathecal administration of L- and D-baclofen in the rat. Eur J Pharmacol. 1991 Apr 24;196(3):267-75.
- [2]. Falch E, et al. Comparative stereostructure-activity studies on GABAA and GABAB receptor sites and GABA uptake using rat brain membrane preparations. J Neurochem. 1986 Sep;47(3):898-903.
- [3]. Falch E, et al. Comparative stereostructure-activity studies on GABAA and GABAB receptor sites and GABA uptake using rat brain membrane preparations. J Neurochem. 1986 Sep;47(3):898-903.
- [4]. Orsnes G, et al. The effect of baclofen on the transmission in spinal pathways in spastic multiple sclerosis patients. Clin Neurophysiol. 2000 Aug;111(8):1372-9.
-

Caution: Product has not been fully validated for medical applications. For research use only.

Tel: 609-228-6898

Fax: 609-228-5909

E-mail: tech@MedChemExpress.com

Address: 1 Deer Park Dr, Suite Q, Monmouth Junction, NJ 08852, USA