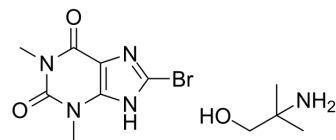


Pamabrom

| | | | |
|---------------------------|---|-------|----------|
| Cat. No.: | HY-17391 | | |
| CAS No.: | 606-04-2 | | |
| Molecular Formula: | C ₁₁ H ₁₈ BrN ₅ O ₃ | | |
| Molecular Weight: | 348.2 | | |
| Target: | Others | | |
| Pathway: | Others | | |
| Storage: | Powder | -20°C | 3 years |
| | | 4°C | 2 years |
| | In solvent | -80°C | 6 months |
| | | -20°C | 1 month |



SOLVENT & SOLUBILITY

In Vitro

DMSO : 150 mg/mL (430.79 mM; Need ultrasonic)

| Concentration | Solvent | Mass | | |
|---------------------------|---------|-----------|------------|------------|
| | | 1 mg | 5 mg | 10 mg |
| Preparing Stock Solutions | 1 mM | 2.8719 mL | 14.3596 mL | 28.7191 mL |
| | 5 mM | 0.5744 mL | 2.8719 mL | 5.7438 mL |
| | 10 mM | 0.2872 mL | 1.4360 mL | 2.8719 mL |

Please refer to the solubility information to select the appropriate solvent.

In Vivo

- Add each solvent one by one: 10% DMSO >> 40% PEG300 >> 5% Tween-80 >> 45% saline
Solubility: ≥ 2.67 mg/mL (7.67 mM); Clear solution
- Add each solvent one by one: 10% DMSO >> 90% (20% SBE-β-CD in saline)
Solubility: ≥ 2.67 mg/mL (7.67 mM); Clear solution
- Add each solvent one by one: 10% DMSO >> 90% corn oil
Solubility: ≥ 2.67 mg/mL (7.67 mM); Clear solution

BIOLOGICAL ACTIVITY

Description

Pamabrom is a common over-the-counter diuretic used for relief of menstrual-associated symptoms. The active diuretic ingredient in pamabrom is 8-bromotheophylline. Pamabrom is available in combination with acetaminophen (paracetamol) for various conditions such as back pain and menstrual relief. The acetaminophen helps reduce menstrual pains and the pamabrom reduces associated bloating.

REFERENCES

[1]. Ortiz MI, Rangel-Flores E, Carrillo-Alarcón LC, et al. Prevalence and impact of primary dysmenorrhea among Mexican high school students. Int J Gynaecol Obstet. 2009 Dec;107(3):240-3.

[2]. Swanson JK, English JC 3rd. Serum sickness-like reaction to Pamabrom. J Drugs Dermatol. 2006 Mar;5(3):284-6.

[3]. Di Girolamo G, Sánchez AJ, De Los Santos AR, et al. Is acetaminophen, and its combination with pamabrom, an effective therapeutic option in primary dysmenorrhoea? Expert Opin Pharmacother. 2004 Mar;5(3):561-70.

[4]. Pamabrom

Caution: Product has not been fully validated for medical applications. For research use only.

Tel: 609-228-6898

Fax: 609-228-5909

E-mail: tech@MedChemExpress.com

Address: 1 Deer Park Dr, Suite Q, Monmouth Junction, NJ 08852, USA