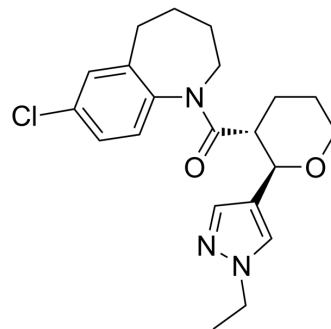


## PLK1/p38γ-IN-1

Cat. No.:	HY-155377
CAS No.:	2418614-81-8
Molecular Formula:	C <sub>21</sub> H <sub>26</sub> ClN <sub>3</sub> O <sub>2</sub>
Molecular Weight:	387.9
Target:	Polo-like Kinase (PLK); p38 MAPK
Pathway:	Cell Cycle/DNA Damage; MAPK/ERK Pathway
Storage:	Please store the product under the recommended conditions in the Certificate of Analysis.



### BIOLOGICAL ACTIVITY

#### Description

PLK1/p38γ-IN-1 (compound 14) is a multitarget inhibitor of PLK1 and p38γ. PLK1/p38γ-IN-1 inhibits the growth of human hepatocellular carcinoma and hepatoblastoma cells in vitro<sup>[1]</sup>.

### REFERENCES

[1]. Cheng Z, et al. Chee Wezen X. Combination of QSAR Modeling and Hybrid-Based Consensus Scoring to Identify Dual-Targeting Inhibitors of PLK1 and p38γ. J Chem Inf Model. 2023;63(21):6912-6924.

**Caution: Product has not been fully validated for medical applications. For research use only.**

Tel: 609-228-6898

Fax: 609-228-5909

E-mail: tech@MedChemExpress.com

Address: 1 Deer Park Dr, Suite Q, Monmouth Junction, NJ 08852, USA